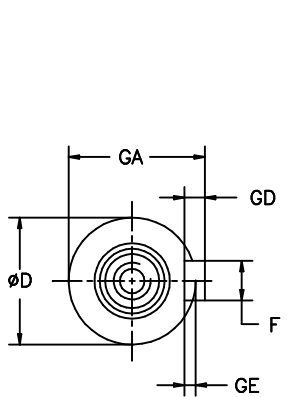
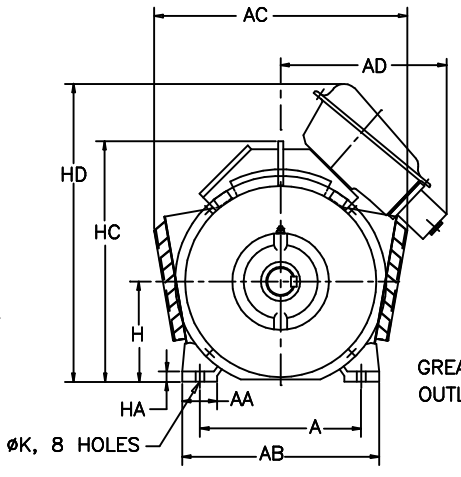


AS PER KSD-02-027

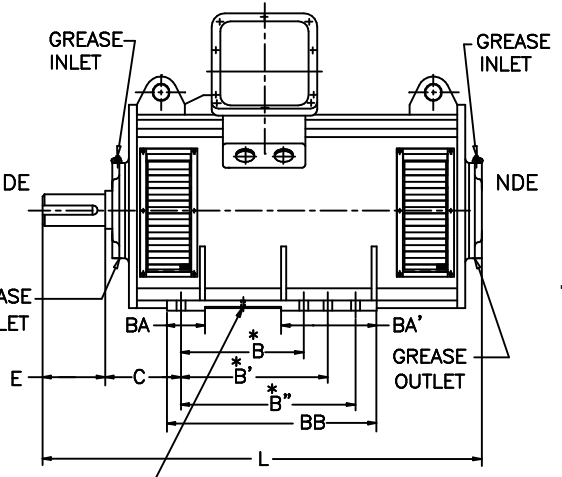
SURFACE ROUGHNESS (MAXIMUM)	Ra (µm)	0.025	0.05	0.1	0.2	0.4	0.6	0.8	1.6	3.2	6.3	12.5	25	50
		▽	▽	▽	▽	▽	▽	▽	▽	▽	▽	▽	▽	▽
		NEW												



SHAFT EXTENSION DETAILS



M12, 2 NOS. EARTHING SCREW ONE ON EACH SIDE.



NOTE:-

- MOTOR CONFIRMS TO IS: 325.
- DEGREE OF PROTECTION IP:23.
- TOLERANCE ON H: +0.00
- TOLERANCE ON D: m6
- PROTECTED CENTRE HOLE
M20 x 40 DEEP FOR "D" 65 TO 80
AND M24 x 50 DEEP FOR "D" 110
AS PER IS:2540 AT SHAFT EXTENSION.
- 3 PAIRS OF MOUNTING HOLES ARE PROVIDED ON MOTOR AT NON DRIVE END SIDE. CUSTOMER CAN CHOOSE ANY ONE PAIR FOR FOUNDATION.
- 4 NOS. OF M10 SCREWS, ONE ON EACH FOOT PAD FOR JACKING PURPOSE.

SA 355	4 & ABOVE	610	125	710	990	630	500	560	630	150	300	780	254	110	210	28	116	16	10	355	50	815	1100	28	1515
SA 355	2	610	125	710	990	630	500	560	630	150	300	780	254	80	170	22	85	14	9	355	50	815	1100	28	1475
FRAME	POLE	A	AA	AB	AC	AD	B	B'	B''	BA	BA'	BB	C	D	E	F	GA	GD	GE	H	HA	HC	HD	K	L

UNMENTIONED	CHAM:	4000	2000	1000	4000	2000	1000	±3
	UC:	6	315	1000	2000	4000	8000	±2
ANGLES ± 1/2°	RAD:	0	6	315	1000	2000	4000	±1.2
	LINEAR DIMENSIONS (MACHINED)	ABOVE	UP TO	±0.2	±0.5	±0.8	±1.2	±3
REV.	ZONE	BRIEF RECORD		SIGNATURE	DATE	PP&MM SH II	PRINTS ISSUED TO	

THIS SUPERSEDES _____ FROM dt. _____ SIGN & dt. _____
 THIS SUPERSEDED BY _____ FROM dt. _____ SIGN & dt. _____

MATERIAL SPECIFICATION	RAW MATERIAL SIZE	WEIGHT kg
		RM FINL

CASTING/FAB REF. _____ No.P.S.: 1

USED ON

SA 355

TITLE: DIMENSIONAL DRAWING

31101207

SHEET NO. _____ OF _____

SCALE N.P.S.

DRAWN CHECKED APPROVED

at.21-3-07 at.21-3-07 at.21-3-07

KIRLOSKAR

KIRLOSKAR ELECTRIC COMPANY LTD. BANGALORE - 560055 (INDIA)

FORM No. 11401033