

IF IN DOUBT ASK

M.M.E.

ALL INFORMATION CONTAINED IN THIS DOCUMENT IS CONFIDENTIAL AND THE PROPERTY OF **KIRLOSKAR ELECTRIC CO. LTD.** REPRODUCTION OF THESE IN ANY FORM IS TO BE DONE WITH THE SPECIFIC PERMISSION OF THE COMPANY.

SIGN & DATE.

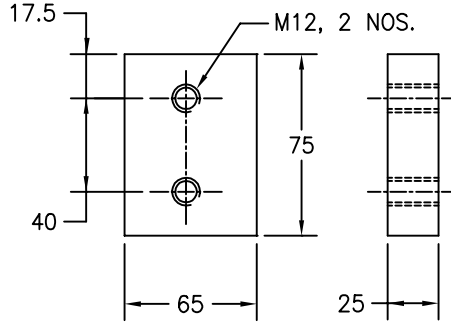
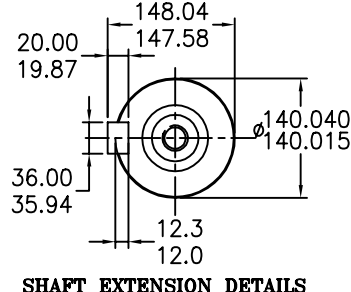
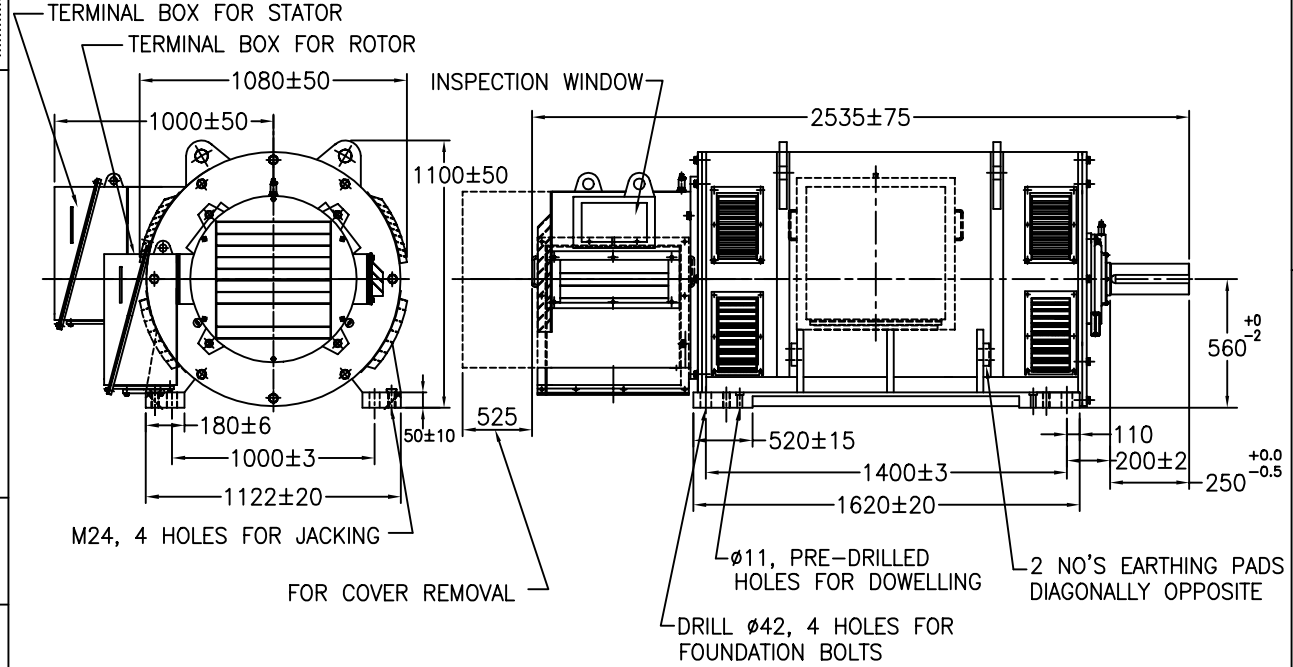
FROM dt.

DRAWING No.

THIS SUPERSEDES THIS IS SUPERSEDED BY

4 3 2 1

DO NOT SCALE THE DRAWING ALL DIMENSIONS ARE IN mm UNLESS OTHERWISE STATED



SL.NO	TERMINAL BOX	DRAWING NO.
1	STATOR	41102205
2	ROTOR	43506101

NOTE:-

- MOTOR CONFORMS TO IS:325
- DIMENSIONS WITHOUT TOLERANCE, ARE FOR REFERANCE ONLY.
- MOUNTING IM: 1001
- ENCLOSURE TO IP:23/IC:01
- WEIGHT OF THE MOTOR : 6000 Kg. (APPROX.)
- PROTECTED CENTER HOLE "M24X50" DEEP AS PER IS: 2540 AT SHAFT EXTENSION.
- 4 NO'S OF M24 HOLES ONE ON EACH FOOT PROVIDED FOR JACKING.

REV.	ZONE	BRIEF RECORD	SIGNATURE	DATE	PRINTS ISSUED TO.
					MKTG. ACM

CUSTOMER / O/A No.	SCALE	DRAWN	Sd/BNH	22/08/06
USED ON / TYPE	NTS	CHECKED	Sd/HCR	22/08/06
KCW560C4		APPROVED	Sd/HCR	22/08/06

TITLE:	DRG. NO.
DIMENSIONAL DRAWING	41109006
SHEET NO.....1..... OF.....1.....	



FORM No. 11401037