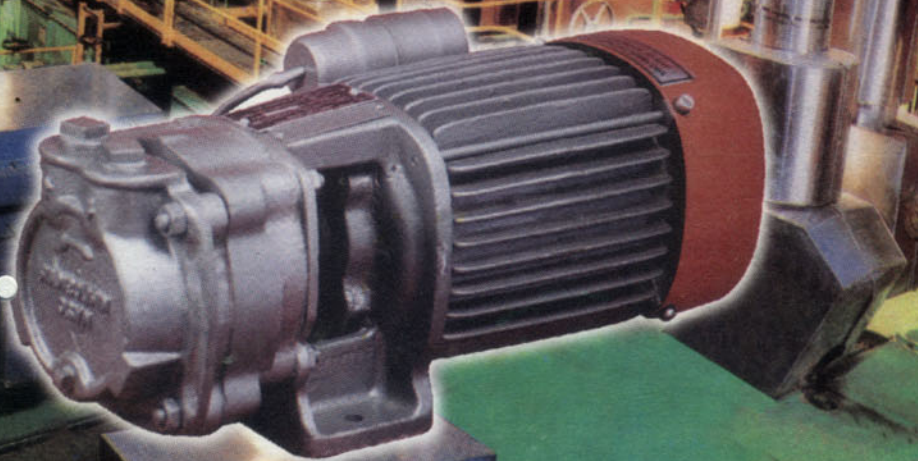


3B  
**KIRLOSKAR**

**VACUUM PUMP**



**KV**

**FOR INDUSTRIES**

*Kirloskar*

3B  
**KIRLOSKAR BROTHERS LIMITED**

# KIRLOSKAR 'KV' SERIES VACUUM PUMPS

Single suction, single delivery, high speed, horizontal, centrifugal, monobloc pumps.

## Range :

- VACUUM : Up to 650 mm of Mercury.  
 AIR FLOW RATE : Up to 55 cubic metres per hour.  
 POWER RATING : 0.75 kW to 2.2 kW.  
 (1.0 HP to 3.0 HP)

## Applications :

- Priming of large pumps.
- Evacuation of air from suction pipes and chambers.
- General Applications : Drying, Evaporation, Distillation, Filtration, Sterilisation, Condensation, Degasification, Sucking gases .
- Specific applications : Twist drilling machine, Removing water from pulp layer, Labeling, Bottle filling, De-odorising.

## Standard Features :

- Withstand wide voltage fluctuations.
- Dynamically balanced rotating parts.
- Designed to prevent overloading and hence motor burning.
- Grease lubricated deep groove ball bearings.
- Easy maintenance and spares availability.
- Models are with IP-44 protection.

## Special Features :

- Voltage range from :  
180V to 240V - for single phase and  
300V to 440V - for three phase.
- Models in 3 phase A.C. power supply are also available with IP-55 protection on request.
- Class of insulation 'B'.

## Material of Construction :

### Standard Supply :

- Rotor (impeller) : Bronze.  
 Delivery casing : Cast iron.  
 Motor body : Cast iron.  
 Shaft : Carbon steel.

### Optional Supply :

- Shaft : Stainless steel.

## Direction of Rotation :

Anticlockwise, when viewed from pump side.

## APPROXIMATE PERFORMANCE OF 'KV' SERIES, 2 POLE MONOBLOC VACUUM PUMPS AT RATED SPEED 50 Hz, AC POWER SUPPLY

PUMP MODEL	POWER RATING		PIPE SIZE (mm)		VACUUM IN mm OF MERCURY								RATED SPEED RPM
					0	100	200	300	400	500	600	650	
	kW	HP	SUC.	DEL.	( AIR FLOW RATE IN CUBIC METRES PER HOUR)								
KV 20	0.75	1.0	20	20	21.0	18.0	14.5	11.5	8.0	5.0	2.0	0.0	2700
KV 30	2.2	3.0	30	30	55.0	46.3	38.0	30.0	21.3	13.0	5.0	0.0	2840

Standard supply of KV 20 pumpset is in single phase & KV 30 in three phase A.C. power supply. However, KV 20 can also be supplied in three phase A.C. power supply against requirement.

NOTE : Performance applicable for air at NTP based on employment of clear water at 30°C as working fluid.