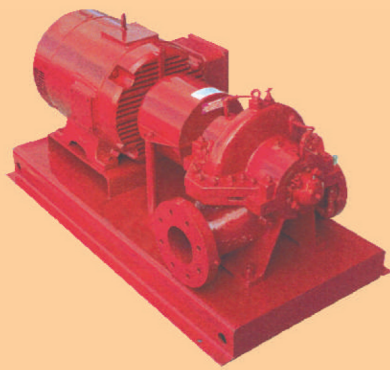


FIRE PROTECTION PUMP PACKAGES



Electric Motor Driven Pumpset

Main fire pump package motor driven set consists of following

- ☐ Main fire pump - FM approved or UL listed
- ☐ Motor - As per NFPA 20/ UL listed
- ☐ Motor controller - FM approved or UL listed

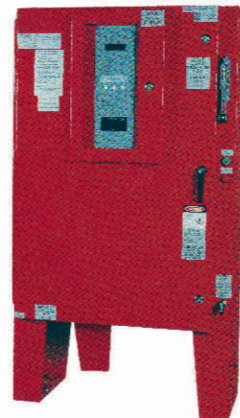
All above equipments are mounted on a common skid

Controllers

To ensure that the package meets the quality norms of the NFPA and FM/UL Standards and to have total compatibility controllers are sourced from experienced and reliable manufacturers who follow similar specifications and processes.

Controllers for electrical motor driven fire pumps are available for various methods of starting. These include Direct on line, Star-delta, Auto-transformer, Soft start etc..Packaged Diesel Engine driven pumpsets incorporate 12V or 24V DC controller.

Controllers can be supplied free standing or mounted on the base plate, completely wired and connected to the pump package.



Pump controller



Jockey Pump with Controller

It consists of compact inline vertical jockey pump with controller mounted on a common skid or a separate skid, where controller is FM approved or UL listed.

- Delivery Size upto : 100mm
- Capacity : 75 m³/ hr
- Head upto : 220 m



Enriching Lives

KIRLOSKAR FIRE FIGHTING PUMPS AND PACKAGES

Kirloskar Brothers Limited (KBL), the largest manufacturer and exporter of pumps in India is one of the leading solution providers in the field of fluid handling in the world. The core competency lies in designing comprehensive solutions for complex fluid handling problems. The captive foundry for producing special alloys for pump components for varied application, facilities for precision machining and computerized testing and long term partnership with vendors add strength to KBL's extensive infrastructure.

KBL has been supplying Fire Protection Pumps and Packages for many decades. The most important aspect of its fire protection package is the reliability of fire pumping system to ensure adequate water supply at required pressure at the emergency conditions.

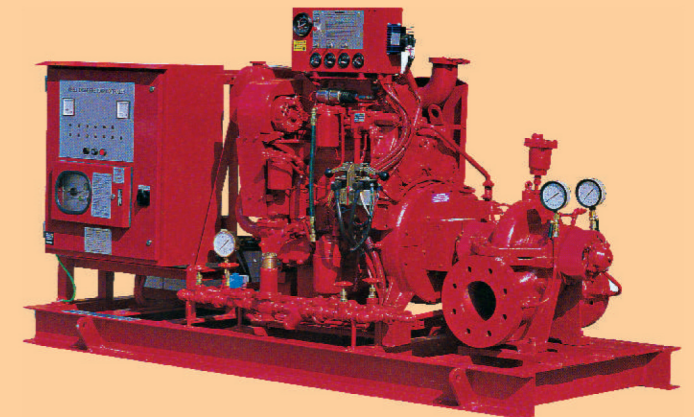
KBL is having a wide range of pumps, 'FR' and 'MSF' series developed exclusively for fire-fighting applications. 'FR' series are FM approved and UL listed. MSF is UL listed.

Highlights of KBL Fire Pump Packages

- ☐ Diesel engine driven pumpset
- ☐ Main fire pump -FM approved / UL listed
- ☐ Diesel engine - FM approved / UL listed heat exchanger cooled
- ☐ Engine Controller - FM approved / UL listed
- ☐ Drive shaft
- ☐ Secondary water-cooling loop

All above equipments are mounted on common skid.

Jockey pump with controller mounted on separate skid where controller is FM approved or UL listed



Engine drive split case pumpset

Applications

- ☐ Commercial complexes
- ☐ High rise buildings
- ☐ Airports and ports
- ☐ Oil and Gas on shore and off shore platforms
- ☐ Petroleum and Petrochemical complexes
- ☐ Power stations and transformer stations
- ☐ Warehouses
- ☐ Manufacturing and Chemical Industry

NFPA 20 Fire Pumpset International Standards and Approvals

Most of the countries stipulate that the fire pumps to meet the standards issued by the National Fire Protection Association – USA. KBL designs the fire pumpsets as per NFPA –20 specifications to meet the stringent fire safety norms and at the same time for cost effectiveness.

Apart from NFPA many valued customers require that pumps and controllers are also approved and listed by world renowned fire certifying agencies such as Factory Mutual (FM) or Underwriters Laboratories (UL). Our pumping systems are manufactured and exhaustively tested in compliance with stringent approval standards set by these agencies. With these international approvals a fire pump system has greater reliability in preventing damage to property in case of fire.

PUMPS CONFORMING TO

