

Super "A" Series Speed Reducers

With Japanese Technology



INLINE REDUCER



MOTOR MOUNT REDUCER

POWER BUILD LIMITED



THE SUPER ABILITY DYNAMIC DRIVE

The next generation of Gear motor / Reducer

SUPER PERFORMANCE

- ❖ Compact And Space Saving
- ❖ Reduced Weight
- ❖ Reduced Mounting Dimension
- ❖ Low Noise And Vibration
- ❖ Easy To Assemble / Dismantle



❖ Two Class System

Enables you to select the most appropriate model for your application.

Allow the best selection for every working condition, from uniform loading to heavy shock loading.

❖ Stylish Form

Simple yet futuristic design has outstanding ruggedness for the industrial application. This compact design will fit in your equipment and save valuable space.

❖ CAD Data

Electronic catalogue is available for CAD work, offering quick and precise design and drawing.

POWER BUILD LIMITED



SKK - Japanese Technology for Gear Motors and Gear reducers in INDIA

THE SUPER ABILITY DYNAMIC DRIVE

The next generation of Gear motor / Reducer

SUPER PERFORMANCE

- ❖ Compact And Space Saving
- ❖ Reduced Weight
- ❖ Reduced Mounting Dimension
- ❖ Low Noise And Vibration
- ❖ Easy To Assemble / Dismantle
- ❖ Stylish Design
- ❖ Air Pressure Tested for Ensuring No Leakage.
- ❖ Factory Filled - *EP GREASE* for longer lasting lubrication.

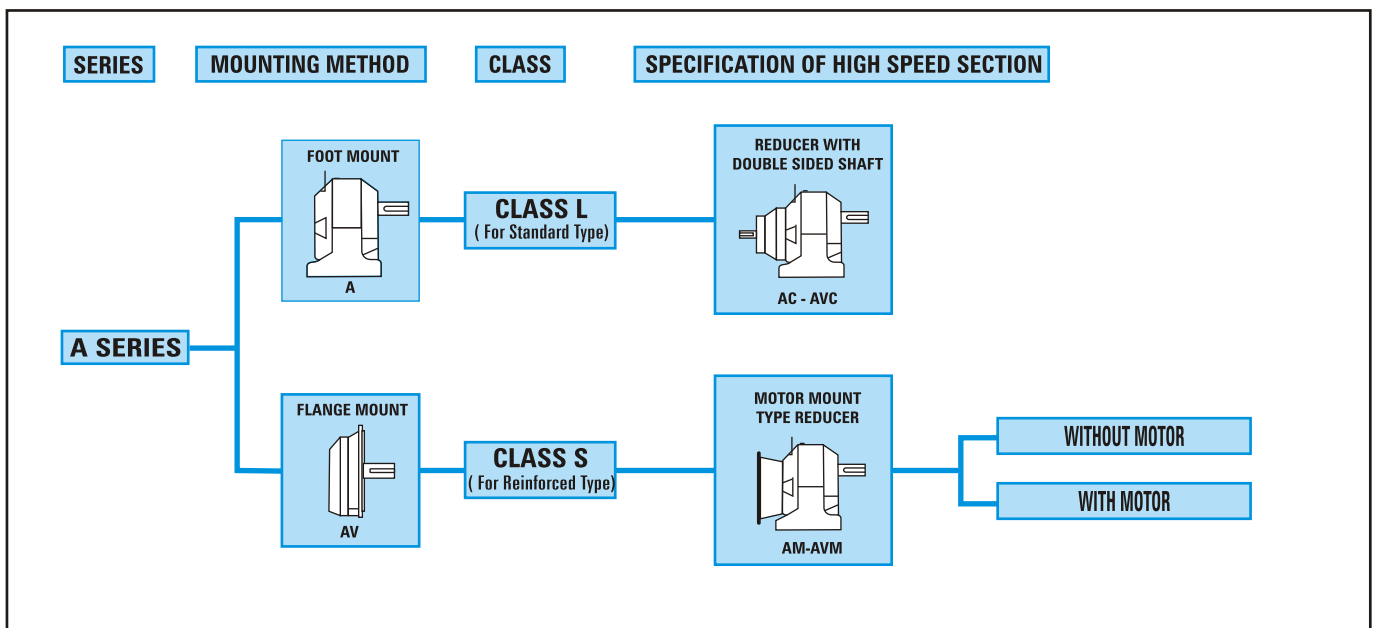


- ❖ **Two Class System**
Enables you to select the most appropriate model for your application. Allow the best selection for every working condition, from uniform loading to heavy shock loading.
- ❖ **Stylish Form**
Simple yet futuristic design has outstanding ruggedness for the industrial application. This compact design will fit in your equipment and save valuable space.

POWER BUILD LIMITED, introduces state-of-the-art mechanical power transmission products namely **MOTOR MOUNT REDUCER & INLINE GEAR REDUCER** under the license agreement with **Seiki-Kogyosho Limited (SKK)** of Japan - a company manufacturing and marketing these produces since last more than seven decades.

On the one side are **Power Build Limited** - a company manufacturing Gear motors, Inline Gear Reducers and Motor Mount Reducers in the country for more than twenty-seven years - as well as **Elecon Engineering Company Limited** - a company manufacturing Worm, Helical and Spiral Bevel Gear Reducers in the country for more than forty years, and on the other side is the latest technology of **Seiki-Kogyosho Limited (SKK)**, Japan who are considered to be the pioneers in the line in japan. The product offered is the latest **SUPER - A series** Motor mount reducers and Inline Gear Reducers, introduced by SKK in recent years.

All the above gives a guarantee for the product of high quality and reliability.



MOUNTING METHOD : NO RESTRICTION. CAN BE MOUNTED IN ANY POSITION.

Capacity (KW)

Standard Ratio

Capacity (KW)	Standard Ratio	1/5	1/10	1/15	1/20	1/25	1/30	1/45	1/50	1/60	1/75	1/100	1/130	1/150	1/200
0.4	0.4	1/5	1/10	1/15	1/20	1/25	1/30	1/45	1/50	1/60	1/75	1/100	1/130	1/150	1/200
0.75	0.75	1/5	1/10	1/15	1/20	1/25	1/30	1/45	1/50	1/60	1/75	1/100	1/130	1/150	1/200
1.1	1.1	1/5	1/10	1/15	1/20	1/25	1/30	1/45	1/50	1/60	1/75	1/100	1/130	1/150	1/200
1.5	1.5	1/5	1/10	1/15	1/20	1/25	1/30	1/45	1/50	1/60	1/75	1/100	1/130	1/150	1/200
2.2	2.2	1/5	1/10	1/15	1/20	1/25	1/30	1/45	1/50	1/60	1/75	1/100	1/130	1/150	1/200
3.7	3.7	1/5	1/10	1/15	1/20	1/25	1/30	1/45	1/50	1/60	1/75	1/100	1/130	1/150	1/200
5.5	5.5	1/5	1/10	1/15	1/20	1/25	1/30	1/45	1/50	1/60	1/75	1/100	1/130	1/150	1/200
7.5	7.5	1/5	1/10	1/15	1/20	1/25	1/30	1/45	1/50	1/60	1/75	1/100	1/130	1/150	1/200
11	11	1/5	1/10	1/15	1/20	1/25	1/30	1/45	1/50	1/60	1/75	1/100	1/130	1/150	1/200

Gear Box and High Speed side covers are manufactured from high quality aluminium alloy or graded cast iron depending upon the size of the gearbox.

All gear components are manufactured from high quality alloy steel, hardened and tooth flanks finished either by grinding, shaving or honing.

Output Shafts are manufactured from high quality alloy steel and ground. They are provided with keyway and a key. Output Shaft are provided with tapped holes.

The units are filled with super class EP grease which makes the unit almost maintenance free.

Designation :

A.....M		A	20	L	0.4
		Reducer Size	Reduction Ratio	L for uniform load S for light shock load	KW
Output Shaft Diameter					
		A - ϕ 18	B - ϕ 22	C - ϕ 24	D - ϕ 32
		E - ϕ 38	F - ϕ 42	G - ϕ 48	H - ϕ 56
				K - ϕ 63	
Foot Mounting			Flange Mounting		
AC	Reducer with solid input shaft		AVC	Reducer with solid input shaft	
AM	Reducer with hollow input shaft		AVM	Reducer with hollow input shaft	

★ For details please refer PBL

□ **Class:** Type A motor mount reducers covers the following 2 classification enabling you to select the most appropriate model for your application.

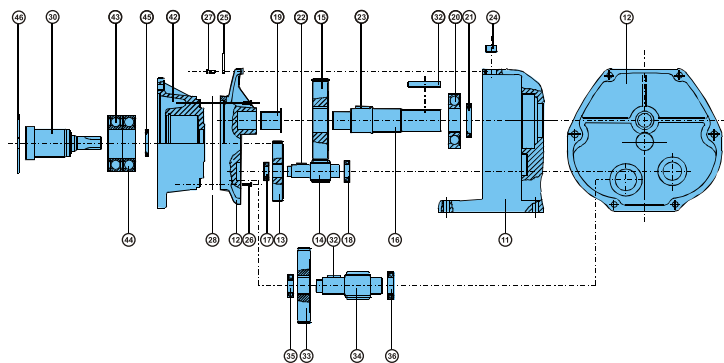
- for uniform load application of capacity range of 0.4kW through 3.7kW.

- for higher reduction ratios and for over 5.5kW capacity application and for higher overhung loads and for larger outputshaft torque requirement applications.

* For Dimensions of tapped holes at the output shaft end please refer Table 4 on page - 8.

PBL - SKK

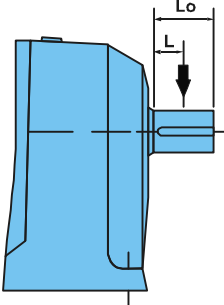
ARRANGEMENT DRAWING - MOTOR MOUNT REDUCER (AM)



ITEM NO.	DENOMINATION	ITEM NO.	DENOMINATION	ITEM NO.	DENOMINATION	ITEM NO.	DENOMINATION
11	GEAR CASE	18	BEARING 2 ND	25	EYE BOLT	34	3 RD PINION
12	H.S. RING		PINION (L)	26	BOLT - H. S. COVER	35	BEARING 3 RD (PINION) (H)
13	1 ST GEAR	19	BEARING - L.S. SHAFT (H)	27	BOLT - H. S. RING	36	BEARING 3 RD. PINION (L)
14	2 ND PINION	20	BEARING - L.S. SHAFT (L)	28	GASKET - H. S. COVER	42	H. S. COVER
15	2 ND GEAR	21	OIL SEAL - L.S. SHAFT	30	INPUT SHAFT - HOLLOW	43	BEARING H. S. COVER (H)
16	L.S. SHAFT	22	KEY - 1 ST GEAR		(FIRST PINION)	44	BEARING H. S. COVER (L)
17	BEARING 2 ND	23	KEY - 2 ND GEAR	31	KEY - 3 RD GEAR	45	OIL SEAL - H.S. COVER
	PINION (H)	24	OIL INLET PLUG	32	3 RD GEAR	46	INTERNAL CIRCLIP
						47	KEY - OUTPUT

■ Selection :

For the correct selection and the efficient use of A series reducer, please review the following.

Selection procedure																	
1. Determination of ration	Calculate the reduction ratio from required output speed. Please refer the characteristics table on Page 4 - 5 to determine ratio for reducer. (Slip of motor is not considered.)																
2. Calculation of torque	Calculate the torque required by a driven machine. Calculate the maximum torque in case there is fluctuation.																
3. Selection of frame	<div style="display: flex; justify-content: space-between;"> <div style="width: 45%;"> <p>For motormount : Referring to the column of required ratio in the characteristics table on Page 4 - 5, select a frame which meets the requirement of torque in the two formulas below.</p> <p>formula (1) $T_E \leq T_A$ formula (2) $T_E \times sf \leq T_A \times sfG$</p> </div> <div style="width: 45%; border-left: 1px dashed black; padding-left: 10px;"> <p>For reducer : Referring to the column of required ratio in the characteristics table on Page 6 - 7, select a frame which meets the following formula.</p> <p>formula (1) $T_E \times sf \leq T_G$</p> </div> </div> <div style="border: 1px dashed black; padding: 5px; margin-top: 10px; width: fit-content; margin-left: auto; margin-right: auto;"> <p>T_E = actual torque of load (torque required by driven machine) T_A = output torque (max. driven torque) sf = service factor (load factor for operating condition, table 1) sfG = service factor of gearing for torque T_A T_G = permissible output torque of reducer</p> </div> <p style="text-align: center; margin-top: 10px;">Table 1. Service factor</p> <table border="1" style="width: 100%; text-align: center;"> <thead> <tr> <th>load\operating hour</th> <th>less than 3 hrs./day</th> <th>3 - 10 hrs./day</th> <th>more than 10 hrs./day</th> </tr> </thead> <tbody> <tr> <td>uniform load</td> <td>1.00</td> <td>1.00</td> <td>1.25</td> </tr> <tr> <td>medium shock load</td> <td>1.00</td> <td>1.25</td> <td>1.50</td> </tr> <tr> <td>heavy shock load</td> <td>1.50</td> <td>1.75</td> <td>2.00</td> </tr> </tbody> </table>	load\operating hour	less than 3 hrs./day	3 - 10 hrs./day	more than 10 hrs./day	uniform load	1.00	1.00	1.25	medium shock load	1.00	1.25	1.50	heavy shock load	1.50	1.75	2.00
load\operating hour	less than 3 hrs./day	3 - 10 hrs./day	more than 10 hrs./day														
uniform load	1.00	1.00	1.25														
medium shock load	1.00	1.25	1.50														
heavy shock load	1.50	1.75	2.00														
4. Calculation of overhung load (O.H.L.)	<p>In case radial load is applied to the input/output shaft (high speed/low speed shaft), please make sure that it is within the limit of allowable overhung load. (Please refer to the characteristics tables on Page 4 - 7.)</p> <div style="border: 1px solid black; padding: 10px; margin: 10px 0; width: fit-content;"> $O.H.L. = \frac{2000 \times T_E \times sf}{D} \times \frac{C_f}{L_f}$ </div> <p> T_E = actual torque of load sf = service factor (Refer to Table 1) D = pitch circle diameter of chain sprocket wheel, pulley, etc. (mm) C_f = load connection factor (Refer to Table 2) L_f = load location factor (Refer to Table 3) </p> <div style="display: flex; justify-content: space-around; margin-top: 10px;"> <div style="width: 45%;"> <p>Table 2 : C_f : Load connection factor</p> <table border="1" style="width: 100%; text-align: center;"> <thead> <tr> <th>simplex chain</th> <th>duplex chain</th> <th>gear</th> <th>V-belt</th> </tr> </thead> <tbody> <tr> <td>1.00</td> <td>1.25</td> <td>1.25</td> <td>1.50</td> </tr> </tbody> </table> </div> <div style="width: 45%;"> <p>Table 3 : L_f : Load connection factor</p> <table border="1" style="width: 100%; text-align: center;"> <thead> <tr> <th>0.3 L_o</th> <th>0.5 L_o</th> <th>0.7 L_o</th> <th>0.9 L_o</th> </tr> </thead> <tbody> <tr> <td>1.10</td> <td>1.00</td> <td>0.83</td> <td>0.70</td> </tr> </tbody> </table> </div> </div> <div style="text-align: right; margin-top: 10px;">  </div> <p>Note : In case chain sprocket wheel or gear is mounted on the shaft, the point of load application shall be as close as the side of shaft shoulder.</p>	simplex chain	duplex chain	gear	V-belt	1.00	1.25	1.25	1.50	0.3 L_o	0.5 L_o	0.7 L_o	0.9 L_o	1.10	1.00	0.83	0.70
simplex chain	duplex chain	gear	V-belt														
1.00	1.25	1.25	1.50														
0.3 L_o	0.5 L_o	0.7 L_o	0.9 L_o														
1.10	1.00	0.83	0.70														
5. NOTE	For large GD^2 value or application involving frequent start-stop please refer to PBL for the selection of reducer.																

Characteristics Table of Motor Mount Reducer

Nominal Ratio	Output RPM	No. of Reduction Stage	Motor Capacity 4 Pole	Class	Frame	Actual Ratio (1/R)	Output Torque (TA)			Allowable O.H.L. On Output Shaft	
							50 Hz			50 Hz	
							Nm	Kgf.m	sfg	N	Kgf
1/5	300	2	0.4 kW	L	A5L	4.983	12.1	1.23	1.55	1180	120
				S	B5S	4.900	11.9	1.21	1.55	1320	135
			0.75 kW	L	B5L	5.113	23.2	2.37	1.51	1320	135
				S	C5S	5.048	22.9	2.34	1.52	1860	190
			1.1 kW	L	C5L	4.859	32.31	3.30	1.84	1860	190
				S	D5S	4.994	33.21	3.39	1.9	3190	325
			1.5 kW	L	C5L	4.859	44.1	4.50	1.35	1860	190
				S	D5S	4.994	45.4	4.63	1.40	3190	325
			2.2 kW	L	D5L	5.141	68.5	6.99	1.32	3190	325
S	E5S	4.848		64.6	6.59	1.32	3480	355			
3.7 kW	L	E5L	4.949	111.0	11.30	1.32	3480	355			
	S	F5S	5.023	113.0	11.50	1.32	3480	355			
5.5 kW	S	F5S	5.065	169.0	17.20	1.32	2650	270			
	S	G5S	5.054	229.0	23.40	1.32	3820	390			
7.5 kW	S	G5S	5.054	229.0	23.40	1.32	3820	390			
	S	H5S	4.952	330.0	33.70	1.31	2840	290			
1/10	150	2	0.4 kW	L	A10L	9.893	24.0	2.45	1.33	1520	155
				S	B10S	10.316	25.0	2.55	1.34	1860	190
			0.75 kW	L	B10L	9.881	44.9	4.58	1.41	1520	155
				S	C10S	9.800	44.5	4.54	1.52	2600	265
			1.1 kW	L	C10L	9.802	65.18	6.65	1.9	3140	320
				S	D10S	9.719	64.63	6.59	1.9	3720	380
			1.5 kW	L	C10L	9.802	89.1	9.09	1.40	3140	320
				S	D10S	9.719	88.3	9.01	1.40	3720	380
			2.2 kW	L	D10L	9.761	130.0	13.30	1.32	3720	380
				S	E10S	10.287	137.0	14.00	1.32	5540	565
			3.7 kW	L	E10L	10.107	226.0	23.10	1.32	5820	695
S	F10S	9.852		221.0	22.50	1.32	5820	695			
5.5 kW	S	F10S	9.692	322.0	32.90	1.32	6080	620			
	S	G10S	9.988	454.0	46.30	1.32	8780	895			
7.5 kW	S	G10S	9.988	454.0	46.30	1.32	8780	895			
	S	H10S	9.905	660.0	67.30	1.32	7350	750			
1/15	100	2	0.4 kW	L	A15L	15.147	37.3	3.81	1.16	1570	160
				S	B15S	15.273	37.0	3.78	1.24	2060	210
			0.75 kW	L	B15L	15.595	70.8	7.23	1.17	1620	165
				S	C15S	14.552	66.1	6.74	1.52	2790	285
			1.1 kW	L	C15L	15.364	102.17	10.43	1.81	3430	350
				S	D15S	15.034	99.97	10.20	1.9	4070	415
			1.5 kW	L	C15L	15.364	140.0	14.20	1.33	3430	350
				S	D15S	15.034	137.0	13.90	1.40	4070	415
			2.2 kW	L	D15L	15.944	212.0	21.70	1.28	4070	415
				S	E15S	14.773	197.0	20.10	1.32	5980	610
			3.7 kW	L	E15L	14.727	330.0	33.70	1.29	7350	750
S	F15S	14.682		329.0	33.60	1.32	7350	750			
5.5 kW	S	F15S	15.077	502.0	51.20	1.09	6960	710			
	S	G15S	14.796	672.0	68.60	1.28	9800	1000			
7.5 kW	S	G15S	14.796	672.0	68.60	1.28	9800	1000			
	S	H15S	15.352	1020.0	104.00	1.09	12000	1220			
1/20	75	2	0.4 kW	L	A20L	18.836	45.6	4.66	1.15	1570	160
				S	B20S	20.653	50.0	5.11	1.28	2161	220
			0.75 kW	L	B20L	19.808	90.0	9.18	1.13	1670	170
				S	C20S	19.303	87.7	8.95	1.52	2890	295
			1.1 kW	L	C20L	19.145	127.31	12.99	1.51	3530	360
				S	D20S	19.531	129.88	13.25	1.9	4210	430
			1.5 kW	L	C20L	19.145	174.0	17.70	1.11	3530	360
				S	D20S	19.531	177.0	18.10	1.40	4210	430
			2.2 kW	L	D20L	19.504	260.0	26.50	1.19	4210	430
				S	E20S	21.212	283.0	28.80	1.32	6330	645
			3.7 kW	L	E20L	19.785	443.0	45.20	1.03	7350	750
S	F20S	20.201		453.0	46.20	1.32	7550	770			
5.5 kW	S	G20S	19.856	662.0	67.50	1.32	11100	1130			
	S	H20S	20.250	920.0	93.90	1.25	13500	1380			
7.5 kW	S	H20S	20.250	920.0	93.90	1.25	13500	1380			
	S	K20S	20.286	1350.0	138.00	1.24	14200	1450			
1/25	60	2	0.4 kW	L	B25L	26.232	63.5	6.48	1.39	2160	220
				S	C25S	25.212	61.1	6.23	1.55	3630	370
			0.75 kW	L	C25L	24.055	109.0	11.10	1.52	3970	405
				S	D25S	24.315	111.0	11.30	1.52	4900	500
			1.1 kW	L	D25L	23.893	158.88	16.21	1.67	4900	500
				S	E25S	25.455	169.27	17.27	1.9	7200	735
			1.5 kW	L	D25L	23.893	217.0	22.10	1.23	4900	500
				S	E25S	25.455	231.0	23.60	1.40	7210	735
			2.2 kW	L	E25L	23.554	314.0	32.00	1.32	7350	750
				S	F25S	23.766	317.0	32.30	1.32	7840	800
			3.7 kW	L	F25L	24.241	545.0	55.70	1.20	7840	800
S	G25S	25.057		561.0	57.30	1.32	11400	1160			
5.5 kW	S	H25S	23.192	772.0	78.80	1.30	15000	1530			
	S	K25S	24.456	1110.0	113.00	1.32	16100	1640			
1/30	50	2	0.4 kW	L	B30L	29.400	71.2	7.27	1.07	2160	220
				S	C30S	31.418	76.2	7.77	1.55	3770	385
			0.75 kW	L	C30L	28.955	132.0	13.40	1.03	3970	405
				S	D30S	29.744	135.0	13.80	1.52	5050	515
			1.1 kW	L	D30L	27.942	185.81	18.96	1.67	5050	515
				S	E30S	28.264	28.264	19.16	1.9	7350	750
			1.5 kW	L	D30L	27.942	254.0	25.90	1.23	5050	515
				S	E30S	28.264	257.0	26.20	1.40	7350	750
			2.2 kW	L	E30L	27.686	369.0	37.60	1.29	7350	750
				S	F30S	28.636	382.0	38.90	1.32	8040	820
			3.7 kW	L	F30L	28.205	633.0	64.50	1.04	8040	820
S	G30S	29.455		660.0	67.40	1.32	11800	1200			
5.5 kW	S	H30S	29.082	968.0	98.80	1.24	16000	1630			
	S	K30S	29.013	1310.0	134.00	1.25	17100	1740			
7.5 kW	S	K30S	29.013	1310.0	134.00	1.25	17100	1740			
	S	L30S	29.013	1310.0	134.00	1.25	17100	1740			
1/45	33	3	0.4 kW	L	B45L	44.898	106.0	10.90	1.05	2160	220
				S	C45S	46.383	110.0	11.20	1.46	3970	405

Characteristics Table of Motor Mount Reducer

Nominal Ratio	Output RPM	No. of Reduction Stage	Motor Capacity 4 Pole	Class	Frame	Actual Ratio (1/R)	Output Torque (TA)			Allowable O.H.L. On Output Shaft	
							50 Hz			50 Hz	
							Nm	Kgf.m	sfg	N	Kgf
1/45	33	3	0.75 kW	L	C45L	46.460	206.0	21.1	*	3970	405
				S	D45S	44.163	196.0	20.0	1.23	5100	520
			1.1 kW	L	D45L	45.665	303.66	30.99	1.36	5100	520
				S	E45S	47.292	314.48	32.09	1.44	7350	750
			1.5 kW	L	D45L	45.665	406.0	41.4	*	5100	520
				S	E45S	47.292	421.0	42.9	1.06	7350	750
			2.2 kW	L	E45L	45.818	597.0	60.9	*	7350	750
				S	F45S	43.182	563.0	57.4	1.08	9750	995
3.7 kW	L	F45L	44.807	982.0	100.0	*	8040	820			
	S	G45S	46.364	1020.0	104.0	1.09	13700	1400			
5.5 kW	L	H45L	42.878	1400.0	143.0	1.04	17000	1730			
	S	K45S	44.389	1970.0	201.0	*	18800	1920			
1/50	30	3	0.4 kW	L	B50L	51.140	121.0	12.4	*	2160	220
				S	C50S	50.445	120.0	12.2	1.40	3970	405
			0.75 kW	L	C50L	50.529	225.0	22.9	*	3970	405
				S	D50S	48.109	214.0	21.8	1.17	5100	520
			1.1 kW	L	D50L	49.745	330.80	33.75	1.36	5100	520
				S	E50S	51.705	343.83	35.08	1.36	7350	750
			1.5 kW	L	D50L	49.745	422.0	43.1	*	5100	520
				S	E50S	51.705	459.0	46.9	*	7350	750
2.2 kW	L	E50L	50.093	631.0	64.4	*	7350	750			
	S	F50S	53.342	695.0	70.9	*	10000	1020			
3.7 kW	L	F50L	52.394	1060.0	108.0	*	8040	820			
	S	G50S	50.356	1110.0	113.0	1.01	13700	1400			
5.5 kW	L	H50L	50.242	1640.0	167.0	1.0	18100	1850			
	S	K50S	51.352	2230.0	228.0	*	21600	2200			
1/60	25	3	0.4 kW	L	B60L	58.698	130.0	13.2	*	2160	220
				S	C60S	60.445	143.0	14.6	1.25	3970	405
			0.75 kW	L	C60L	60.545	242.0	24.7	*	3970	405
				S	D60S	57.823	257.0	26.2	1.06	5100	520
			1.1 kW	L	D60L	59.790	397.59	44.57	1.36	5100	520
				S	E60S	62.735	417.18	42.57	1.36	7350	750
			1.5 kW	L	D60L	59.790	431.0	44.0	*	5100	520
				S	E60S	62.735	508.0	51.8	*	7350	750
2.2 kW	L	E60L	60.779	634.0	64.7	*	7350	750			
	S	F60S	62.374	813.0	83.0	*	10100	1030			
3.7 kW	L	F60L	57.000	1080.0	110.0	*	8280	845			
	S	G60S	56.924	1250.0	127.0	*	13700	1400			
5.5 kW	L	H60L	59.873	1670.0	170.0	*	18100	1850			
	S	K60S	64.341	2480.0	253.0	*	21600	2200			
1/75	20	3	0.4 kW	L	B75L	73.576	132.0	13.4	*	2160	220
				S	C75S	80.182	190.0	19.4	1.00	3970	405
			0.75 kW	L	C75L	74.204	245.0	25.0	*	3970	405
				S	D75S	75.121	334.0	34.1	*	5100	520
			1.1 kW	L	D75L	75.336	500.97	51.12	1.36	5100	520
				S	E75S	74.455	495.11	50.52	1.36	7350	750
			1.5 kW	L	D75L	75.336	439.0	44.8	*	5100	520
				S	E75S	74.455	647.0	66.0	*	7350	750
2.2 kW	L	F75L	73.396	829.0	84.6	*	10500	1070			
	S	G75S	72.808	949.0	96.8	1.05	13700	1400			
3.7 kW	L	G75L	74.103	1260.0	129.0	*	13700	1400			
	S	H75S	72.409	1590.0	162.0	1.06	18100	1850			
5.5 kW	L	K75L	74.555	2430.0	248.0	*	21600	2200			
	S	K75S	74.555	2430.0	248.0	*	21600	2200			
1/100	15	3	0.4 kW	L	C100L	98.270	233.0	23.8	*	3970	405
				S	D100S	98.117	233.0	23.7	1.31	5100	520
			0.75 kW	L	D100L	94.653	421.0	42.9	*	5100	520
				S	E100S	92.688	412.0	42.0	1.10	7350	750
			1.1 kW	L	E100L	99.967	664.76	67.83	1.36	7350	750
				S	F100S	102.987	684.85	69.88	1.36	11600	1180
			1.5 kW	L	E100L	99.967	661.0	67.5	*	7350	750
				S	F100S	102.987	844.0	86.1	*	11600	1180
2.2 kW	L	F100L	102.198	1070.0	109.0	*	11600	1180			
	S	G100S	100.962	1230.0	125.0	*	13700	1400			
3.7 kW	L	G100L	94.659	1610.0	165.0	*	13700	1400			
	S	H100S	101.108	1890.0	193.0	*	18100	1850			
5.5 kW	L	K100L	95.135	2790.0	285.0	*	21600	2200			
	S	K100S	95.135	2790.0	285.0	*	21600	2200			
1/130	11.5	3	0.4 kW	L	C130L	127.726	225.0	23.0	*	3970	405
				S	D130S	120.025	284.0	29.0	1.03	5100	520
			0.75 kW	L	D130L	127.427	428.0	43.7	*	5100	520
				S	E130S	124.449	553.0	56.4	*	7350	750
			1.1 kW	L	F130L	122.637	815.51	83.22	1.36	11600	1180
				S	G130S	121.154	805.65	82.21	1.41	13700	1400
			1.5 kW	L	F130L	122.637	1040.0	106.0	*	11600	1180
				S	G130S	121.154	1080.0	110.0	1.04	13700	1400
2.2 kW	L	G130L	123.657	1470.0	150.0	*	13700	1400			
	S	H130S	125.169	1470.0	150.0	*	18100	1850			
3.7 kW	L	K130L	120.055	2640.0	269.0	*	21600	2200			
	S	K130S	120.055	2640.0	269.0	*	21600	2200			
1/150	10	3	0.4 kW	L	C150L	140.318	225.0	23.0	*	3970	405
				S	D150S	151.232	330.0	33.7	*	5100	520
			0.75 kW	L	D150L	141.183	425.0	43.4	*	5100	520
				S	E150S	150.567	483.0	49.3	*	7350	750
			1.1 kW	L	F150L	149.610	994.88	101.52	1.36	11600	1180
				S	G150S	148.388	986.75	100.69	1.36	13700	1400
			1.5 kW	L	F150L	149.610	1020.0	104.0	*	11600	1180
				S	G150S	148.388	1260.0	129.0	*	13700	1400
2.2 kW	L	G150L	145.360	1470.0	150.0	*	13700	1400			
	S	H150S	149.161	1470.0	150.0	*	18100	1850			
3.7 kW	L	K150L	144.582	2780.0	284.0	*	21600	2200			
	S	K150S	144.582	2780.0	284.0	*	21600	2200			
1/200	7.5	3	0.4 kW	L	D200L	184.403	437.0	44.6	*	5100	520
				S	E200S	194.997	462.0	47.2	*	7350	750
			0.75 kW	L	E200L	196.520	592.0	60.4	*	7350	750
				S	F200S	196.987	875.0	89.3	1.07	11600	1180
			1.1 kW	L	G200L	174.432	1159.94	118.36	1.36	13700	1400
				S	H200S	196.987	1309.93	133.67	1.36	18100	1850
			1.5 kW	L	G200L	174.432	1500.0	153.0	*	13700	1400
				S	H200S	196.987	1500.0	153.0	*	18100	1850
2.2 kW	L	K200L	198.751	2590.0	264.0	*	21600	2200			
	S	K200S	198.751	2590.0	264.0	*	21600	2200			

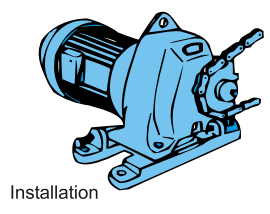
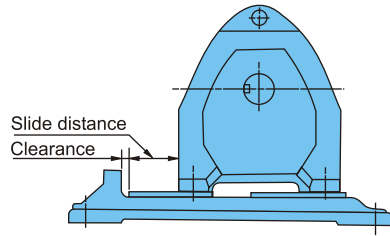
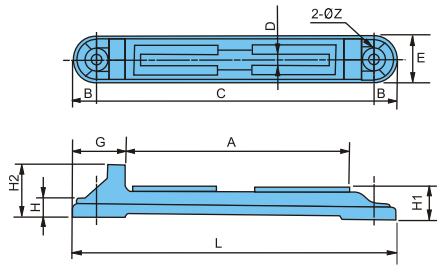
Characteristics Table of inline Reducer

Nominal Ratio	Reducer Frame	Actual Ratio	No. of Reduction Stage	Input RPM 1450 rpm						
				Allowable Input Power	Allowable Output Torque (TG)		Allowable Overhung Load On Input Shaft		Allowable Overhung Load On output Shaft	
				kW	Nm	kgf.m	N	kgf	N	kgf
1/5	ACA5L	4.983	2	0.50	15.1	1.54	265	27	1180	120
	ACB5L	4.983	2	1.05	32.5	3.32	314	32	1323	135
	ACC5L	4.983	2	1.95	57.4	5.86	431	44	1862	190
	ACD5L	4.983	2	2.82	87.8	8.96	470	48	3185	325
	ACE5L	4.983	2	4.77	143.0	14.6	598	61	3479	365
	ACF5S	4.983	2	7.25	223.0	22.7	804	82	2646	270
	ACG5S	4.983	2	9.87	302.0	30.8	990	101	3822	390
	ACH5S	4.983	2	14.5	435.0	44.4	1205	123	2842	290
1/10	ACA10L	9.893	2	0.50	30.0	3.06	265	27	1519	155
	ACB10L	9.881	2	1.05	62.8	6.41	314	32	1519	155
	ACC10L	9.802	2	1.95	116.0	11.8	431	44	3136	320
	ACD10L	9.761	2	2.82	167.0	17.0	470	48	3724	380
	ACE10L	10.107	2	4.77	292.0	29.8	598	61	6811	695
	ACF10S	9.692	2	7.25	425.0	43.4	804	82	6076	620
	ACG10S	9.988	2	9.87	597.0	60.9	990	101	8771	895
	ACH10S	9.905	2	14.5	870.0	88.8	1205	123	7350	750
1/15	ACA15L	15.417	2	0.50	46.6	4.76	265	27	1568	160
	ACB15L	15.595	2	1.05	90.1	9.19	314	32	1617	165
	ACC15L	15.364	2	1.95	181.0	18.5	431	44	3430	350
	ACD15L	15.944	2	2.82	272.0	27.8	470	48	4067	415
	ACE15L	14.727	2	4.77	425.0	43.4	598	61	7350	750
	ACF15S	15.077	2	6.52	597.0	60.7	804	82	6958	710
	ACG15S	14.796	2	9.87	884.0	90.2	990	101	9800	1000
	ACH15S	15.352	2	13.0	1215.0	124.0	1205	123	11956	1220
1/20	ACA20L	18.836	2	0.50	57.0	5.82	265	27	1568	160
	ACB20L	19.808	2	0.92	111.0	11.3	314	32	1666	170
	ACC20L	19.145	2	1.81	210.0	21.4	431	44	3528	350
	ACD20L	19.504	2	2.82	333.0	34.0	470	48	4214	430
	ACE20L	19.785	2	4.14	496.0	50.6	598	61	7350	750
	ACF20S	20.201	2	4.77	583.0	59.5	598	61	7546	770
	ACG20S	19.856	2	7.25	872.0	89.0	804	82	11074	1130
	ACH20S	20.250	2	9.87	1215.0	124.0	990	101	13524	1380
	ACK20S	20.286	2	14.5	1784.0	182.0	1205	123	14210	1450
1/25	ACB25L	26.232	2	0.58	92.1	9.40	265	27	2156	220
	ACC25L	24.055	2	1.05	153.0	15.6	314	32	3969	405
	ACD25L	23.893	2	1.95	282.0	28.8	431	44	4600	500
	ACE25L	23.554	2	2.82	402.0	41.0	470	48	7350	750
	ACF25L	24.341	2	4.77	704.0	71.8	598	61	7840	800
	ACG25S	25.057	2	4.77	724.0	73.9	598	61	11368	1160
	ACH25S	23.192	2	7.25	1019.0	104.0	804	82	14994	1530
	ACK25S	24.456	2	9.87	1460.0	149.0	990	101	16072	1640
1/30	ACB30L	29.400	2	0.47	82.8	8.45	265	27	2156	220
	ACC30L	28.955	2	0.84	147.0	15.0	314	32	3969	405
	ACD30L	27.942	2	1.95	330.0	33.7	431	44	5047	515
	ACE30L	27.686	2	2.82	472.0	48.2	470	48	7350	750
	ACF30L	28.205	2	4.18	714.0	72.9	598	61	8036	820
	ACG30S	29.455	2	4.77	851.0	86.8	598	61	11760	1200
	ACH30S	29.082	2	7.25	1274.0	130.0	804	82	15974	1630
	ACK30S	29.013	2	9.87	1735.0	177.0	990	101	17052	1740
1/45	ACB45L	44.898	3	0.47	124.0	12.7	265	27	2160	220
	ACC45L	46.460	3	0.78	216.0	22.0	314	32	3969	405
	ACD45L	45.665	3	1.50	406.0	41.4	431	44	5096	520
	ACE45L	45.818	3	2.22	604.0	61.6	470	48	7350	750
	ACF45L	44.807	3	3.70	980.0	100.0	598	61	8036	820
	ACG45S	46.364	3	4.48	1235.0	126.0	598	61	13720	1400
	ACH45S	42.878	3	6.36	1617.0	165.0	804	82	16954	1730
	ACK45S	44.389	3	8.25	2166.0	221.0	990	101	18816	1920

Characteristics Table of inline Reducer

Nominal Ratio	Reducer Frame	Actual Ratio	No. of Reduction Stage	Input RPM 1450 rpm						
				Allowable Input Power	Allowable Output Torque (TG)		Allowable Overhung Load On Input Shaft		Allowable Overhung Load On output Shaft	
				kW	Nm	kgf.m	N	kgf	N	kgf
1/50	ACB50L	51.140	3	0.42	128	13.1	265	27	2156	220
	ACC50L	50.529	3	0.75	224	22.9	314	32	3969	405
	ACD50L	49.745	3	1.43	422	43.1	431	44	5096	520
	ACE50L	50.093	3	2.13	631	64.4	470	48	7350	750
	ACF50L	52.394	3	3.41	1058	108.0	598	61	8036	820
	ACG50S	50.356	3	4.15	1235	126.0	598	61	13720	1400
	ACH50S	50.242	3	5.56	1656	169.0	804	82	17800	1820
	ACK50S	51.352	3	7.33	2230	228.0	990	101	19700	2010
1/60	ACB60L	58.698	3	0.37	129	13.2	265	27	2156	220
	ACC60L	60.545	3	0.68	242	24.7	314	32	3969	405
	ACD60L	59.790	3	1.22	431	44.0	431	44	5069	520
	ACE60L	60.779	3	1.76	634	64.7	470	48	7350	750
	ACF60L	57.000	3	3.21	1078	110.0	598	61	8281	845
	ACG60S	56.924	3	3.70	1245	127.0	598	61	13720	1400
	ACH60S	59.873	3	4.71	1666	170.0	804	82	18130	1850
	ACK60S	64.341	3	6.50	2479	253.0	990	101	21560	2200
1/75	ACB75L	73.576	3	0.30	131	13.4	265	27	2156	220
	ACC75L	74.204	3	0.56	245	25.0	314	32	3969	405
	ACD75L	75.336	3	0.98	439	44.8	431	44	5096	520
	ACE75L	74.455	3	1.47	647	66.0	431	44	7350	750
	ACF75L	73.396	3	1.91	829	84.6	470	48	10486	1070
	ACG75S	74.103	3	2.88	1264	129.0	598	61	13720	1400
	ACH75S	72.409	3	4.36	1872	191.0	598	61	18130	1850
	ACK75S	74.555	3	5.87	2587	264.0	804	82	21560	2200
1/100	ACC100L	98.270	3	0.40	233	23.8	265	27	3969	405
	ACD100L	94.653	3	0.76	425	43.4	314	32	5096	520
	ACE100L	99.967	3	1.12	662	67.5	431	44	7350	750
	ACF100L	102.198	3	1.76	1066	109.0	470	48	11564	1180
	ACG100S	94.659	3	2.88	1617	165.0	598	61	13720	1400
	ACH100S	101.108	3	3.17	1891	193.0	598	61	18130	1850
	ACK100S	95.135	3	4.95	2793	285.0	804	82	21560	2200
1/130	ACC130L	127.726	3	0.30	225	23.0	265	27	3969	405
	ACD130L	127.427	3	0.57	428	43.7	314	32	5096	520
	ACE130L	124.449	3	0.75	553	56.4	314	32	7350	750
	ACF130L	122.637	3	1.43	1039	106.0	431	44	11564	1180
	ACG130S	123.657	3	2.00	1470	150.0	470	48	13720	1400
	ACH130S	125.169	3	1.98	1470	150.0	470	48	18130	1850
	ACK130S	120.055	3	3.91	2773	283.0	598	61	21560	2200
1/150	ACC150L	140.318	3	0.27	225	23.0	265	27	3969	405
	ACD150L	141.183	3	0.51	425	43.4	314	32	5096	520
	ACE150L	150.567	3	0.54	483	49.3	314	32	7350	750
	ACF150L	149.610	3	1.15	1019	104.0	431	44	11564	1180
	ACG150S	145.360	3	1.71	1470	150.0	470	48	13720	1400
	ACH150S	149.161	3	1.66	1470	150.0	470	48	18130	1850
	ACK150S	144.582	3	3.25	2783	284.0	598	61	21560	2200
1/200	ACD200L	184.403	3	0.40	437	44.6	265	27	5096	520
	ACE200L	196.520	3	0.51	592	60.4	314	32	7350	750
	ACF200L	196.987	3	0.89	1039	106.0	314	32	11564	1180
	ACG200S	174.432	3	1.45	1499	153.0	431	44	13720	1400
	ACH200S	196.987	3	1.28	1499	153.0	431	44	18130	1850
	ACK200S	198.751	3	2.35	2764	282.0	470	48	21560	2200

Slide rails for A series Motor mounts and inline reducers are available on request



REDUCER FRAME	SLIDE RAIL NO.	DIMENSION (mm)											PUSH BOLT d	CLEARANCE (mm)	SLIDE DISTANCE (mm)	MASS (kg) PER SET (2RAILS)
		L	A	B	C	D	E	G	H1	H2	h	z				
A	ASR-3D	414	290	27	360	14	54	67	40	68	20	12	M10	45	35	12
B														50	30	
C														40	35	
D														10	60	
E	ASR-45	499	355	32	435	18	67	82	50	83	25	15	M12	20	30	15
F	SFR-50	520	370	30	460	20	80	90	60	98	30	19	M16	20	45	21
G														-	40	
H	SFR-63	635	460	35	565	24	90	105	70	115	35	24	M20	15	70	36
K														-	50	

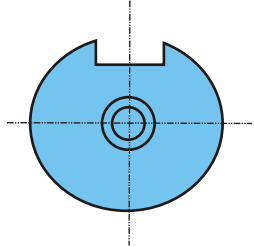


Figure 1

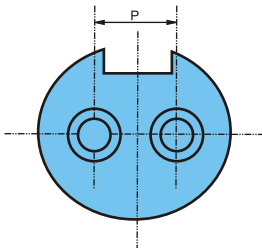


Figure 2

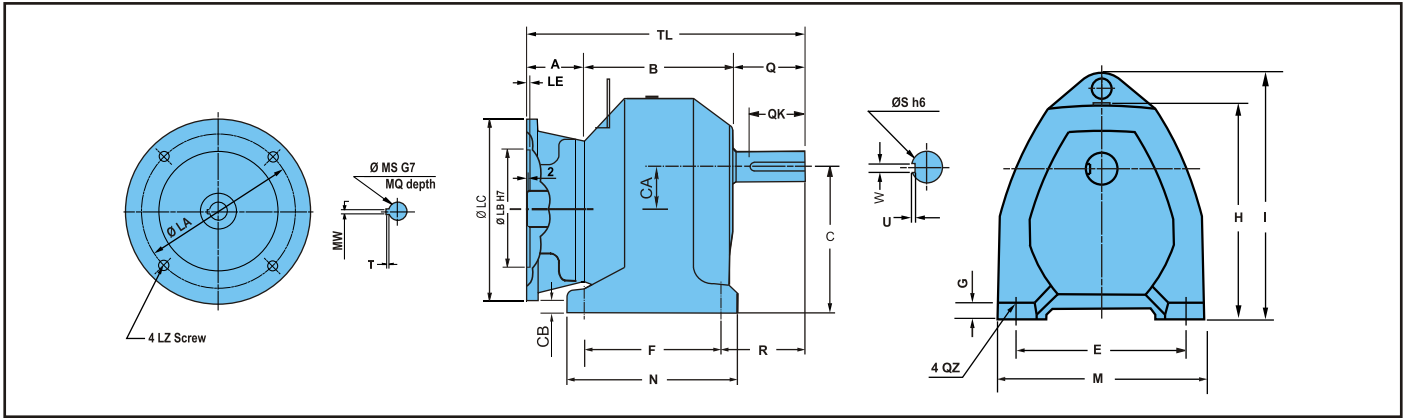
Table No. 4

REDUCER FRAME	FIG	DIMENSION P	SIZE OF	DEPTH
A	1	-	M6	10
B	1	-	M6	10
C	1	-	M6	10
D	2	16	M8	14
E	2	20	M8	14
F	2	22	M10	18
G	2	26	M10	18
H	2	30	M10	18
K	2	36	M12	20

Table No. 5

Capacity (kW)	Motor Frame	Dimension (mm)									
		Motor Mounting Section									
		LA	LB	LC	LE	LZ	MS	MQ	MW	T	
0.4	71	130	110	160	5	M 8	14	30	5	2.3	
0.75	80	165	130	200	5	M10	19	40	5	2.8	
1.5	90L	165	130	200	5	M10	24	50	8	3.3	
2.2	100L	215	180	250	6	M12	28	60	8	3.3	
3.7	112M	215	180	250	6	M12	28	60	8	3.3	
5.5	132S	265	230	300	6	M12	38	80	10	3.3	
7.5	132M	265	230	300	6	M12	38	80	10	3.3	
11	160M	300	250	350	7	M16	42	110	12	3.3	

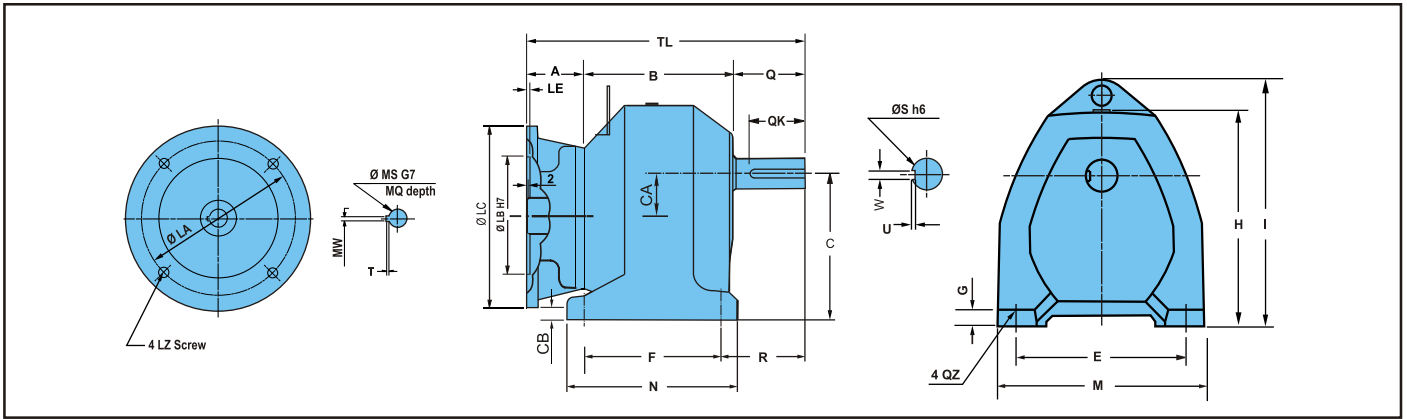
Type (AM) Foot Mounted Motor Mount Reducer-Dimension Table



Class	MOTOR (kW)	Ratio	Frame	Dimension (mm)																	Mass (kg)		
				Dimension (mm)													Shaft-End						
				TL	A	B	C	CA	CB	E	F	G	H	I	M	N	R	Z	Q	QK		S	W
0.4	1/5 AMA5L AMA10L AMA15L AMA20L	158	47	83	90	20	10	130	65	12	137	-	154	90	43.5	12	28	23	18	6	3.5	5.5	
	1/25 AMB25L AMB30L	179	47	96	105	22	3	130	75	12	165	-	155	105	54	12	36	31	22	6	3.5	8	
	1/45 AMB45L AMB50L AMB60L AMB75L	187	47	104	105	22	3	130	75	12	165	-	155	105	45	12	36	31	22	6	3.5	8.5	
	1/100 AMC100L AMC130L AMC150L	201	47	118	120	26	14	140	90	14	185	-	170	120	54	12	36	31	24	8	4	10.5	
	1/200 AMD200L	235	47	130	135	33	22	170	125	17	215	246	210	155	78	12	58	53	32	10	5	20	
	1/5 AMB5L AMB10L AMB15L AMB20L	187	55	96	105	22	-17	130	75	12	165	-	155	105	54	12	36	31	22	6	3.5	10	
	1/25 AMC25L AMC30L	195	55	104	120	26	-6	140	90	14	185	-	170	120	54	12	36	31	24	8	4	11.5	
	1/45 AMC45L AMC50L AMC60L AMC75L	209	55	118	120	26	-6	140	90	14	185	-	170	120	54	12	36	31	24	8	4	12.5	
	1/100 AMD100L AMD130L AMD150L	243	55	130	135	33	2	170	125	17	215	246	210	155	78	12	58	53	32	10	5	22	
	1/200 AME200L	258	55	145	150	34	16	190	140	22	237	274	245	180	83	15	58	53	38	10	5	30	
	1.5	1/5 AMC5L AMC10L AMC15L AMC20L	209	60	113	120	26	-6	140	90	14	185	215	170	120	54	12	36	31	24	8	4	12.5
		1/25 AMD25L AMD30L	246	60	128	135	33	2	170	125	17	215	246	210	155	78	12	58	53	32	10	5	22
1/45 AMD45L AMD50L AMD60L AMD75L		260	60	142	135	33	2	170	125	17	215	246	210	155	78	12	58	53	32	10	5	23	
1/100 AME100L		275	60	157	150	34	16	190	140	22	237	274	245	180	83	15	58	56	38	10	5	31	
1/130 AMF130L AMF150L		313	60	171	180	42	38	220	160	25	283	320	280	200	107	19	82	77	48	14	5	42.5	
1/200 AMG200L		333	60	191	200	47	53	270	195	32	315	362	330	235	107	19	82	77	48	14	5.5	62	
1/5 AMD5L AMD10L AMD15L AMD20L		257	71	128	135	33	-23	170	125	17	215	246	210	155	78	12	58	53	32	10	5	25	
1/25 AME25L AM 30L		268	71	139	150	34	-9	190	140	22	237	274	245	180	83	15	58	53	38	10	5	32.5	
2.2	1/45 AME45L AME50L AME60L	286	71	157	150	34	-9	190	140	22	237	274	245	180	83	15	58	53	38	10	5	34	
	1/75 AMF75L AMF100L	324	71	171	180	42	13	220	160	25	283	320	280	200	107	19	82	77	42	12	5	45.5	
	1/130 AMG130L AMG150L	344	71	191	200	47	28	270	195	32	315	362	330	235	107	19	82	77	48	14	5.5	65	
	1/5 AME5L AME10L AME15L AME20L	271	74	139	150	34	-9	190	140	22	237	274	245	180	83	15	58	53	38	10	5	36.5	
3.7	1/25 AMF25L AMF30L	309	74	153	180	42	13	220	160	25	283	320	280	200	107	19*	82	77	42	12	5	47	
	1/45 AMF45L AMF50L AMF60L	330	74	174	180	42	13	220	160	25	283	320	280	200	107	19	82	77	42	14	5	49.5	
	1/75 AMG75L AMG100L	344	74	188	200	47	28	270	195	32	315	362	330	235	107	19	82	77	48	14	5.5	69	

* For Motor mounting dimension please refer table No. 5 on page 8

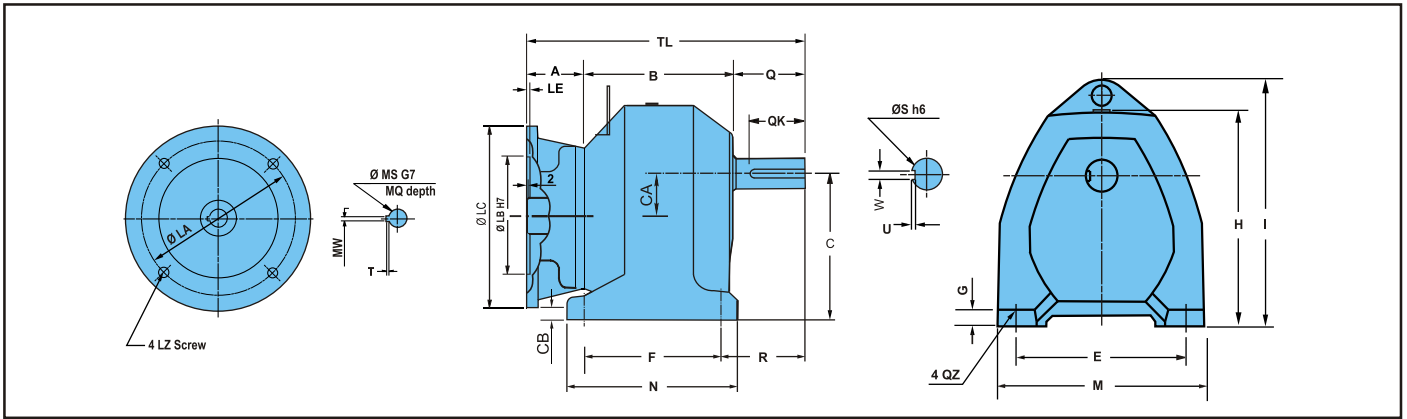
Type (AM) Foot Mounted Motor Mount Reducer-Dimension Table



Class	MOTOR (kW)	Ratio	Frame	Dimension (mm)																			Mass (kg)																						
				Dimension (mm)																Shaft-End																									
				TL	A	B	C	CA	CB	E	F	G	H	I	M	N	R	Z	Q	K	S	W		U																					
S	0.4	1/5	AMB5S	179	47	96	105	22	3	130	75	12	165	-	155	105	54	12	36	31	22	6	3.5	8																					
		1/10	AMB10S																																										
		1/15	AMB15S																																										
		1/20	AMB20S																																										
		1/25	AMC25S																																										
		1/30	AMC30S																																										
	0.4	1/45	AMC45S	201	47	118	120	26	14	140	90	14	185	-	170	120	54	12	36	31	24	8	4	9.5																					
		1/50	AMC50S																																										
		1/60	AMC60S																																										
		1/75	AMC75S																																										
		1/100	AMD100S																																										
		1/130	AMD130S																																										
	0.75	1/150	AMD150S	235	47	130	135	33	22	170	125	17	215	246	210	155	78	12	58	53	32	10	5	20																					
		1/200	AME200S																																										
		1/5	AMC5L																						195	55	104	120	26	-6	140	90	14	185	194	170	120	54	12	36	31	24	8	4	11.5
		1/10	AMC10S																																										
		1/15	AMC15S																																										
		1/20	AMC20S																																										
	1/25	AMD25S																																											
	1/30	AMD30S																																											
	0.75	1/45	AMD45S	243	55	130	135	33	2	170	125	17	215	246	210	155	78	12	58	53	32	10	5	22																					
		1/50	AMD50S																																										
		1/60	AMD60S																																										
		1/75	AMD75S																																										
1/100		AME100S																																											
1/130		AME130S																																											
1.5	1/150	AME150S	258	55	145	150	34	16	190	140	22	237	274	245	180	83	15	58	53	38	10	5	30																						
	1/200	AMF200S																																											
	1/5	AMD5S																						246	60	128	135	33	2	170	125	17	215	246	210	155	78	12	58	53	32	10	5	22	
	1/10	AMD10S																																											
	1/15	AMD15S																																											
	1/20	AMD20S																																											
1/25	AME25S																																												
1/30	AME30S																																												
1.5	1/45	AME45S	257	60	139	150	34	16	190	140	22	237	274	245	180	83	15	58	53	38	10	5	29.5																						
	1/50	AME50S																																											
	1/60	AME60S																																											
	1/75	AME75S																																											
	1/100	AMF100S																																											
	1/130	AMG130S																																											
2.2	1/150	AMG150S	333	60	191	200	47	53	270	195	32	315	362	330	235	107	19	82	77	48	14	5.5	62																						
	1/200	AMH200S																																											
	1/5	AME5S																						268	71	139	150	34	-9	190	140	22	237	274	245	180	83	15	58	53	38	10	5	32.5	
	1/10	AME10S																																											
	1/15	AME15S																																											
	1/25	AMF25S																																											
1/30	AMF30S																																												
1/45	AMF45S																																												
2.2	1/50	AMF50S	324	71	171	180	42	13	220	160	25	283	320	280	200	107	19	82	77	42	12	5	45.5																						
	1/60	AMF60S																																											
	1/75	AMG75S																																											
	1/100	AMG100S																																											
	1/130	AMH130S																																											
	1/150	AMH150S																																											
1/200	AMK200S	395	71	219	250	58	67	340	240	40	385	442	410	300	140	24	105	100	63	18	7	110																							

* For Motor mounting dimension please refer table No. 5 on page 8

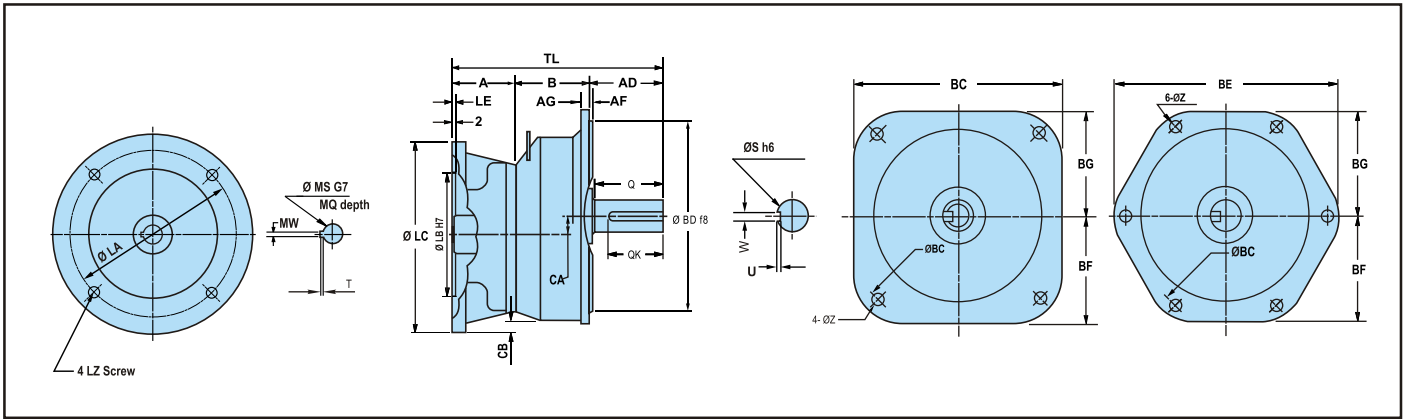
Type (AM) Foot Mounted Motor Mount Reducer-Dimension Table



Class	MOTOR (kW)	Ratio	Frame	Dimension (mm)																	Mass (kg)			
				TL	A	B	C	CA	CB	E	F	G	H	I	M	N	R	Z	Shaft-End					
																	Q	QK	S	W	U			
S	3.7	1/5	AMF5S	309	74	153	180	42	13	220	160	25	283	320	280	200	107	19	82	77	42	12	5	47
		1/10	AMF10S																					
		1/15	AMF15S																					
		1/20	AMF20S																					
		1/25	AMG25S																					
		1/30	AMG30S																					
	5.5	1/45	AMG45S	344	74	188	200	47	28	270	195	32	315	362	330	235	107	19	82	77	48	14	5.5	69
		1/50	AMG50S																					
		1/60	AMG60S																					
		1/75	AMH75S																					
		1/100	AMH100S																					
		1/130	AMK130S																					
	7.5	1/150	AMK150S	408	74	229	250	58	67	340	240	40	385	442	410	300	140	24	105	100	63	18	7	114
		1/5	AMF5L																					
		1/10	AMF10S																					
		1/15	AMF15S																					
		1/20	AMG20S																					
		1/25	AMH25S																					
11	1/30	AMH30S	368	91	195	225	55	20	300	215	35	345	393	360	265	112	24	82	77	56	16	6	82	
	1/45	AMH45S																						
	1/50	AMH50S																						
	1/60	AMH60S																						
	1/75	AMK75S																						
	1/100	AMK100S																						
11	1/5	AMG5S	349	89	178	200	52	-2	270	195	32	315	362	330	235	107	19	82	77	48	14	5.5	72	
	1/10	AMG10S																						
	1/15	AMG15S																						
	1/20	AMH20S																						
	1/25	AMK25S																						
	1/30	AMK30S																						
11	1/45	AMK45S	402	89	208	250	58	42	340	240	40	385	442	410	300	140	24	105	100	63	18	7	112	
	1/50	AMK50S																						
	1/60	AMK60S																						
	1/5	AMH5S																						
	1/10	AMH10S																						
	1/15	AMH15S																						
1/20	AMK20S																							
436	89	242	250	60	40	340	240	40	385	442	410	300	140	24	105	100	63	18	7	122				
405	123	200	225	55	-5	300	215	35	345	393	360	265	112	24	82	77	56	16	6	96				
436	123	208	250	58	17	340	240	40	385	442	410	300	140	24	105	100	63	18	7	121				

* For Motor mounting dimension please refer table No. 5 on page 8

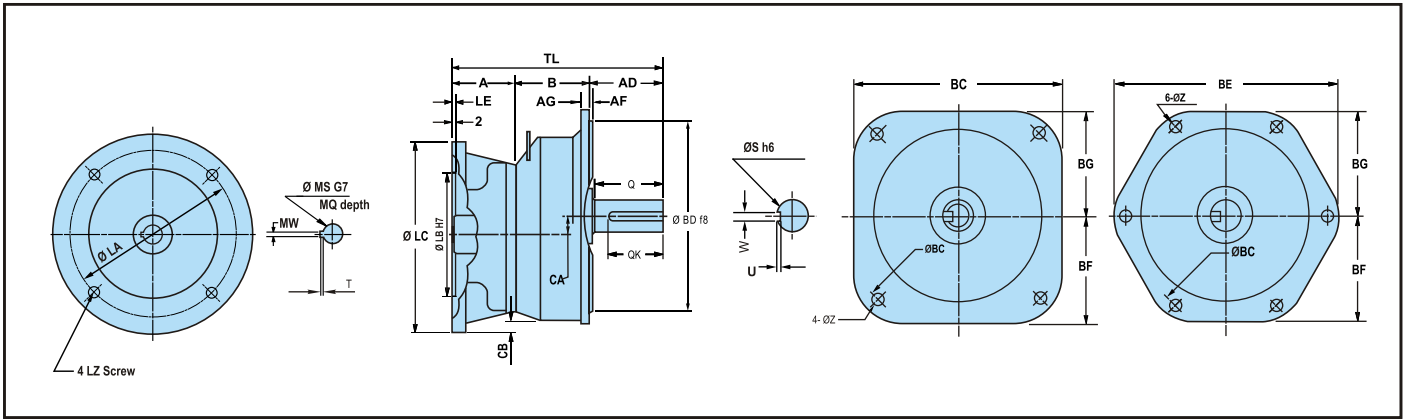
Type (AVM) Flange Mounted Motor Mount Reducer-Dimension Table



Class	MOTOR (kW)	Ratio	Frame	Dimension (mm)																			Mass (kg)	
				TL	A	AD	AF	AG	B	CA	CB	Flange						Shaft-End						
												Fig.	BC	BD	BE	BF	BG	Z	Q	QK	S	W		U
0.4	1/5 1/10 1/15 1/20	AVMA5L AVMA10L AVMA15L AVMA20L	158	47	34	3	11	77	20	-10	1	160	140	160	90	80	10	28	23	18	6	3.5	6	
	1/25 1/30	AVMB25L AVMB30L	179	47	42	3	11	90	22	-2	1	180	160	180	100	90	10	36	31	22	6	3.5	8.5	
	1/45 1/50 1/60 1/75	AVMB45L AVMB50L AVMB60L AVMB75L	187	47	42	3	11	98	22	-2	1	180	160	180	100	90	10	36	31	22	6	3.5	9	
	1/100 1/130 1/150	AVMC100L AVMC130L AVMC150L	201	47	42	3	12	112	26	9	1	225	180	210	115	105	12	36	31	24	8	4	11	
	1/200	AVMD200L	235	47	66	3	16	122	33	17	1	270	230	260	130	130	15	58	53	32	10	5	23	
	1/5 1/10 1/15 1/20	AVMB5L AVMB10L AVMB15L AVMB20L	187	55	42	3	11	90	22	-22	1	80	160	180	100	90	10	36	31	22	6	3.5	10.5	
	1/25 1/30	AVMC25L AVMC30L	195	55	42	3	12	98	26	-11	1	225	180	210	115	105	12	36	31	24	8	4	12	
0.75	1/45 1/50 1/60 1/75	AVMC45L AVMC50L AVMC60L AVMC75L	206	55	42	3	12	112	26	-11	1	225	180	210	115	105	12	36	31	24	8	4	13	
	1/100 1/130 1/150	AVMD100L AVMD130L AVMD150L	243	55	66	3	16	122	33	-3	1	270	230	260	130	130	15	58	53	32	10	5	25	
	1/200	AVME200L	258	55	68	5	16	135	34	16	1	310	250	300	150	150	19	58	53	38	10	5	33.5	
	1/5 1/10 1/15 1/20	AVMC5L AVMC10L AVMC15L AVMC20L	209	60	42	3	12	107	26	-11	1	225	180	210	115	105	12	36	31	24	8	4	13	
	1/25 1/30	AVMD25L AVMD30L	246	60	66	3	16	120	33	-3	1	270	230	260	130	130	15	58	53	32	10	5	25	
	1/45 1/50 1/60 1/75	AVMD45L AVMD50L AVMD60L AVMD75L	260	60	66	3	16	134	33	-3	1	270	230	260	130	130	15	58	53	32	10	5	26	
	1/100	AVME100L	275	60	68	5	16	147	34	16	1	310	250	300	150	150	19	58	53	38	10	5	34.5	
1.5	1/130 1/150	AVMF130L AVMF150L	313	60	92	5	20	161	42	38	2	350	310	390	180	180	19	82	77	42	12	5	45.5	
	1/200	AVMG200L	333	60	92	5	20	181	47	48	2	380	340	420	195	195	19	82	77	48	14	5.5	66	
	1/5 1/10 1/15 1/20	AVMD5L AVMD10L AVMD15L AVMD20L	257	71	66	3	16	120	33	-28	1	270	230	260	130	130	15	58	53	32	10	5	28	
	1/25 1/30	AVME25L AVME30L	268	71	68	5	16	129	34	-9	1	310	250	300	150	150	19	58	53	38	10	5	36	
	1/45 1/50 1/60	AVME45L AVME50L AVME60L	286	71	68	5	16	147	34	-9	1	310	250	300	150	150	19	58	53	38	10	5	37.5	
	1/75 1/100	AVMF75L AVMF100L	324	71	92	5	20	161	42	13	2	350	310	390	180	180	19	82	77	42	12	5	48.5	
	1/130 1/150	AVMG130L AVMG150L	344	71	92	5	20	181	47	23	2	380	340	420	195	195	19	82	77	48	14	5.5	69	
2.2	1/5 1/10 1/15 1/20	AVME5L AVME10L AVME15L AVME20L	271	74	68	5	16	129	34	-9	1	310	250	300	150	150	19	58	53	38	10	5	40	
	1/25 1/30	AVMF25L AVMF30L	309	74	92	5	20	143	42	13	2	350	310	390	180	180	19	82	77	42	12	5	50	
	1/45 1/50 1/60	AVMF45L AVMF50L AVMF60L	330	74	92	5	20	164	42	13	2	350	310	390	180	180	19	82	77	42	12	5	52.5	
	1/75 1/100	AVMG75L AVMG100L	344	74	92	5	20	178	47	23	2	380	340	420	195	195	19	82	77	48	14	5.5	73	

* For Motor mounting dimension please refer table No. 5 on page 8

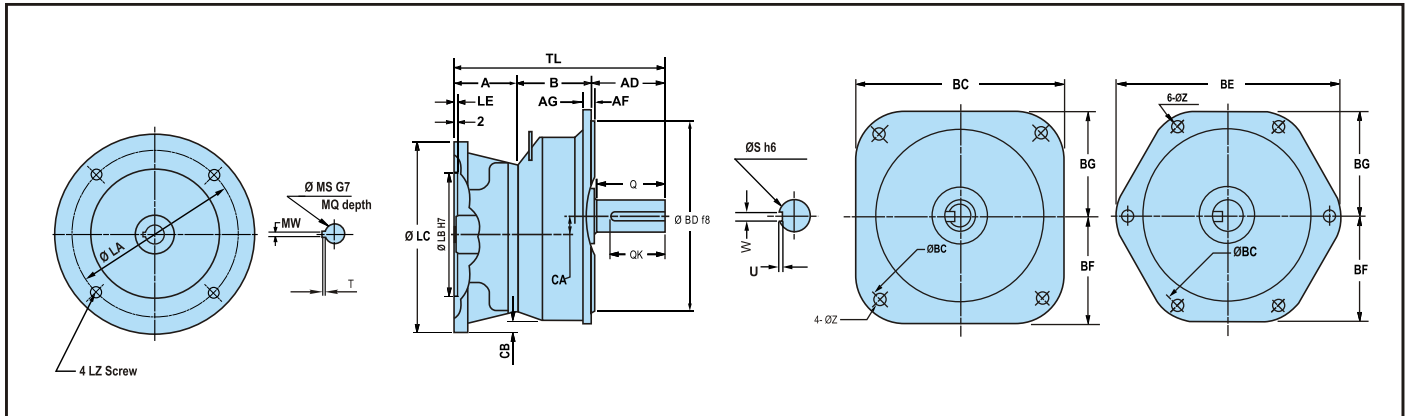
Type (AVM) Flange Mounted Motor Mount Reducer-Dimension Table



Class	MOTOR (kW)	Ratio	Frame	Dimension (mm)																		Mass (kg)	
				TL	A	AD	AF	AG	B	CA	CB	Flange							Shaft-End				
												Fig.	BC	BD	BE	BF	BG	Z	Q	QK	S		W
0.4	1/5 AVMB5S																						
	1/10 AVMB10S	179	47	42	3	11	90	22	-2	1	180	160	180	100	90	10	36	31	22	6	3.5	8.5	
	1/15 AVMB15S																						
	1/20 AVMB20S																						
	1/25 AVMC25S																						
	1/30 AVMC30S	187	47	42	3	12	98	26	9	1	225	180	210	115	105	12	36	31	24	8	4	10	
	1/45 AVMC45S																						
	1/50 AVMC50S	201	47	42	3	12	112	26	9	1	225	180	210	115	105	12	36	31	24	8	4	11	
	1/60 AVMC60S																						
	1/75 AVMC75S																						
	1/100 AVMD100S																						
	1/130 AVMD130S	235	47	66	3	16	122	33	17	1	270	230	260	130	130	15	58	53	32	10	5	23	
1/150 AVMD150S																							
1/200 AVME200S	250	47	68	5	16	135	34	36	1	310	250	300	150	150	19	58	53	38	10	5	31.5		
0.75	1/5 AVMC5L																						
	1/10 AVMC10S	195	55	42	3	12	98	26	-11	1	225	180	210	115	105	12	36	31	24	8	4	12	
	1/15 AVMC 5S																						
	1/20 AVMC20S																						
	1/25 AVMD25S																						
	1/30 AVMD30S	229	55	66	3	16	108	33	-3	1	270	230	260	130	130	15	58	53	32	10	5	24	
	1/45 AVMD45S																						
	1/50 AVMD50S	243	55	66	3	16	122	33	-3	1	270	230	260	130	130	15	58	53	32	10	5	25	
	1/60 AVMD60S																						
	1/75 AVMD75S																						
S	1/100 AVME100S																						
	1/130 AVME130S	258	55	68	5	16	135	34	16	1	310	250	300	150	150	19	58	53	38	10	5	33.5	
	1/150 AVME150S																						
	1/200 AVMF200S	299	55	92	5	20	152	39	41	2	350	310	390	180	180	19	82	77	42	12	5	44.5	
	1/5 AVMD5S																						
1.5	1/10 AVMD10S	246	60	66	3	16	120	33	-3	1	270	230	260	130	130	15	58	53	32	10	5	25	
	1/15 AVMD15S																						
	1/20 AVMD20S																						
	1/25 AVME25S																						
	1/30 AVME30S	257	60	68	5	16	129	34	16	1	310	250	300	150	150	19	58	53	38	10	5	33	
	1/45 AVME45S																						
	1/50 AVME50S	275	60	68	5	16	147	34	16	1	310	250	300	150	150	19	58	53	38	10	5	34.5	
	1/60 AVME60S																						
	1/75 AVME75S																						
	1/ 00 AVMF100S	313	60	92	5	20	161	42	38	2	350	310	390	180	180	19	82	77	42	12	5	45.5	
1/130 AVMG1 0S	333	60	92	5	20	181	47	48	2	380	340	420	195	195	19	82	77	48	14	5.5	66		
1/150 AVMG150S																							
2.2	1/5 AVME5S																						
	1/10 AVME10S	268	71	68	5	16	129	34	-9	1	310	250	300	150	150	19	58	53	38	10	5	36	
	1/15 AVME15S																						
	1/20 AVME20S																						
	1/25 AVMF25S																						
	1/30 AVMF30S	303	71	92	5	20	140	42	13	2	350	310	390	180	180	19	82	77	42	12	5	46	
	1/45 AVMF45S																						
	1/50 AVMF50S	324	71	92	5	20	161	42	13	2	350	310	390	180	180	19	82	77	42	12	5	48.5	
1/60 AVMF60S																							
1/75 AVMG75S																							
1/100 AVMG100S	344	71	92	5	20	181	47	23	2	380	340	420	195	195	19	82	77	48	14	5.5	69		

* For Motor mounting dimension please refer table No. 5 on page 8

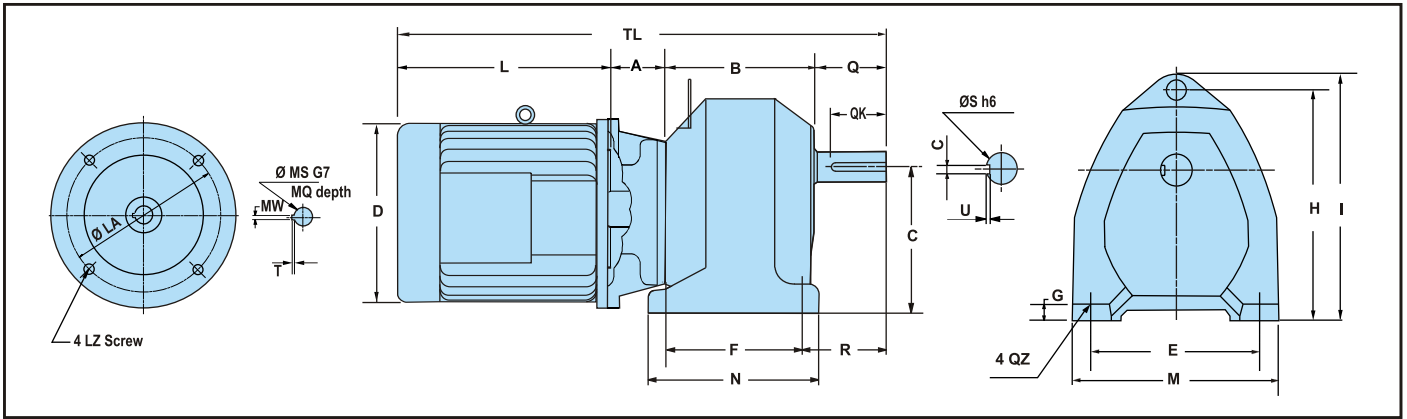
Type (AVM) Flange Mounted Motor Mount Reducer-Dimension Table



Class	MOTOR (kW)	Ratio	Frame	Dimension (mm)																		Mass (kg)			
				TL	A	AD	AF	AG	B	CA	CB	Flange						Shaft-End							
												Fig.	BC	BD	BE	BF	BG	Z	Q	QK	S		W	U	
S	1/5 1/10 1/15 1/20	AVMF5S AVMF10S AVMF15S AVMF20S	309	74	92	5	20	143	42	13	2	350	310	390	180	180	19	82	77	42	12	5	50		
			3.7	AVMG25S AVMG30S	318	74	92	5	20	152	47	23	2	380	340	420	195	195	19	82	77	48	14	5.5	68
				AVMG45S AVMG50S AVMG60S	344	74	92	5	20	178	47	23	2	380	340	420	195	195	19	82	77	48	14	5.5	73
			5.5	AVMF5L AVMF10S AVMF15S	334	91	92	5	20	151	42	-12	2	350	310	390	180	180	19	82	77	42	12	5	53
	AVMG20S	346		91	92	5	20	163	52	-7	2	380	340	420	195	195	19	82	77	48	14	5.5	71		
	AVMG5S AVMG10S AVMG15S	349		89	92	5	20	168	52	-7	2	380	340	420	195	195	19	82	77	48	14	5.5	76		

* For Motor mounting dimension please refer table No. 5 on page 8

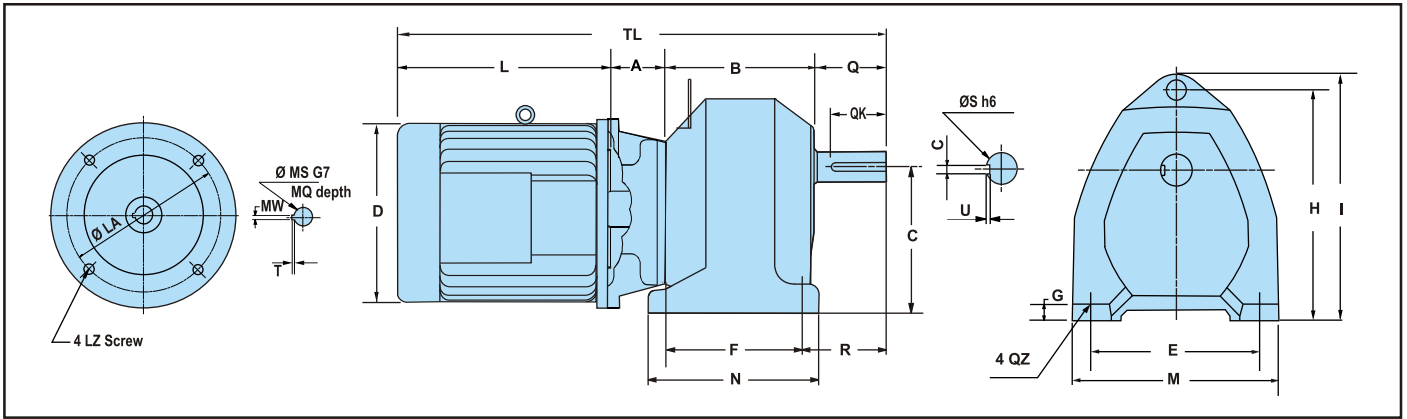
Type (AM) Foot Mounted Motor Mount Reducer with Motor-Dimension Table



Class	MOTOR (kW)	Ratio	Frame	Dimension (mm)																					
				TL	A	B	C	CA	CB	E	F	G	H	I	M	N	R	Z	Q	QK	S	W	U	D	L
0.4	1/5 AMA15L	AMA15L AMA10L AMA15L AMA20L AMB25L AMB30L AMB45L AMB50L AMB60L AMB75L AMC100L AMC130L AMC150L AMD200L	AMA15L AMA10L AMA15L AMA20L AMB25L AMB30L AMB45L AMB50L AMB60L AMB75L AMC100L AMC130L AMC150L AMD200L	361	47	83	90	20	10	130	65	12	137	--	154	90	43.5	12	28	23	18	6	3.5	140	203
	1/25 AMB25L			382	47	96	105	22	3	130	75	12	165	--	155	105	54	12	36	31	22	6	3.5	140	203
	1/45 AMB45L			390	47	104	105	22	3	130	75	12	165	--	155	105	54	12	36	31	22	6	3.5	140	203
	1/60 AMB60L																								
	1/75 AMB75L																								
	1/100 AMC100L			404	47	118	120	26	14	140	90	14	185	--	170	120	54	12	36	31	24	8	4	140	203
	1/130 AMC130L																								
	1/150 AMC150L			436	47	130	135	33	22	170	125	17	215	246	210	155	78	12	58	53	32	10	5	140	203
	1/200 AMD200L																								
	0.75			1/5 AMB15L	AMB15L AMB10L AMB15L AMB20L AMC25L AMC30L AMC45L AMC50L AMC60L AMC75L AMD100L AMD130L AMD150L AME200L	AMB15L AMB10L AMB15L AMB20L AMC25L AMC30L AMC45L AMC50L AMC60L AMC75L AMD100L AMD130L AMD150L AME200L	417	55	96	105	22	-17	130	75	12	165	--	155	105	54	12	36	31	22	6
1/10 AMB10L		425	55	104			120	26	-6	140	90	14	185	--	170	120	54	12	36	31	24	8	4	146	230
1/15 AMB15L																									
1/20 AMB20L		439	55	118			120	26	-6	140	90	14	185	--	170	120	54	12	36	31	24	8	4	145	230
1/25 AMC25L																									
1/30 AMC30L																									
1/45 AMC45L		473	55	130			135	33	2	170	125	17	215	246	210	155	78	12	58	53	32	10	5	156	230
1/50 AMC50L																									
1/60 AMC60L		488	55	145			150	34	16	190	140	22	237	274	245	180	83	15	58	53	38	10	5	156	230
1/75 AMC75L																									
1/100 AMD100L	477	60	113	120	26	-6	140	90	14	185	215	170	120	54	12	36	31	24	8	4	176	268			
1/130 AMD130L																									
1/150 AMD150L	514	60	128	135	33	2	170	125	17	215	246	210	155	78	12	58	53	32	10	5	176	268			
1/200 AMD200L																									
1/45 AMD45L	528	60	142	135	33	2	170	125	17	215	246	210	155	78	12	58	53	32	10	5	176	268			
1/50 AMD50L																									
1/60 AMD60L																									
1/75 AMD75L	543	60	157	150	34	16	190	140	22	237	274	245	180	83	15	58	53	38	10	5	176	268			
1/100 AME100L																									
1/130 AMF130L	473	55	130	135	33	2	170	125	17	215	246	210	155	78	12	58	53	32	10	5	156	230			
1/150 AMF150L																									
1/200 AMG200L	488	55	145	150	34	16	190	140	22	237	274	245	180	83	15	58	53	38	10	5	156	230			
1/25 AME25L																									
1.5	1/30 AME30L	AMD15L AMD10L AMD15L AMD20L AME25L AME30L AME45L AME50L AME60L AMF75L AMF100L AMG130L AMG150L AME15L AME10L AME15L AME20L AMF25L AMF30L AMF45L AMF50L AMF60L AMG75L AMG100L	AMD15L AMD10L AMD15L AMD20L AME25L AME30L AME45L AME50L AME60L AMF75L AMF100L AMG130L AMG150L AME15L AME10L AME15L AME20L AMF25L AMF30L AMF45L AMF50L AMF60L AMG75L AMG100L	557	71	128	135	33	-23	170	125	17	215	246	210	155	78	12	58	53	32	10	5	193	300
	1/45 AME45L			568	71	139	150	34	-9	190	140	22	237	274	245	180	83	15	58	53	38	10	5	193	300
	1/60 AME60L																								
	1/75 AMF75L			624	71	171	180	42	13	220	160	25	283	320	280	200	107	19	82	77	42	12	5	193	300
	1/100 AMF100L																								
	1/130 AMG130L			644	71	191	200	47	28	270	195	32	315	362	330	235	107	19	82	77	48	14	5.5	193	300
	1/150 AMG150L																								
	1/5 AME15L			596	74	139	150	34	-9	190	140	22	237	274	245	180	83	15	58	53	38	10	5	218	325
	1/10 AME10L																								
	1/15 AME15L			634	74	153	180	42	13	220	160	25	283	320	280	200	107	19	82	77	42	12	5	218	325
1/20 AME20L																									
1/25 AMF25L	655	74	174	180	42	13	220	160	25	283	320	280	200	107	19	82	77	42	12	5	218	325			
1/30 AMF30L																									
1/45 AMF45L	669	74	188	200	47	28	270	195	32	315	362	330	235	107	19	82	77	48	14	5.5	218	325			
1/60 AMF60L																									
1/75 AMG75L	669	74	188	200	47	28	270	195	32	315	362	330	235	107	19	82	77	48	14	5.5	218	325			
1/100 AMG100L																									

* For Motor mounting dimension please refer table No. 5 on page 8

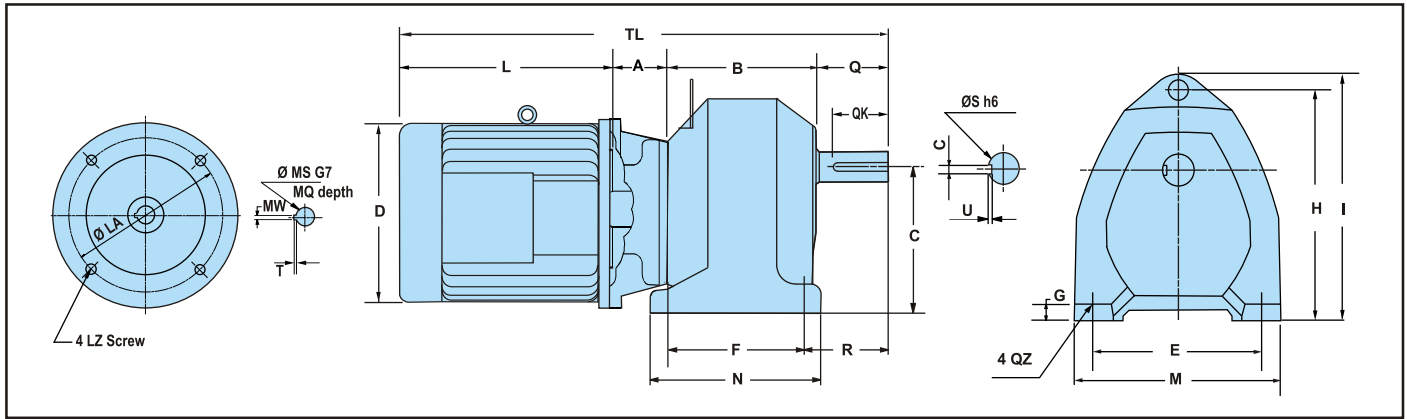
Type (AM) Foot Mounted Motor Mount Reducer with Motor-Dimension Table



Class	MOTOR (kW)	Ratio	Frame	Dimension (mm)																																										
				TL	A	B	C	CA	CB	E	F	G	H	I	M	N	R	Z	Q	QK	S	W	U	D	L																					
S	0.4	1/5	AMB5S	382	47	96	105	22	3	130	75	12	165	--	155	105	54	12	36	31	22	6	3.5	140	203																					
		1/10	AMB10S																																											
		1/15	AMB15S																																											
		1/20	AMB20S																																											
		1/25	AMC25S																																											
		1/30	AMC30S																																											
	0.75	1/45	AMC45S	404	47	118	120	26	14	140	90	14	185	--	170	120	54	12	36	31	24	8	4	140	203																					
		1/50	AMC50S																																											
		1/60	AMC60S																																											
		1/75	AMC75S																																											
		1/100	AMD100S																																											
		1/130	AMD130S																																											
1.5	1/150	AMD150S	438	47	130	135	33	22	170	125	17	215	246	210	155	78	12	58	53	32	10	5	140	203																						
	1/200	AME200S																																												
	1/5	AMC5L																							425	55	104	120	26	-6	140	90	14	185	194	170	120	54	12	36	31	24	8	4	156	230
	1/10	AMC10S																																												
	1/15	AMC15S																																												
	1/20	AMC20S																																												
1/25	AMD25S																																													
1/30	AMD30S																																													
2.2	1/45	AMD45S	473	55	130	135	33	2	170	125	17	215	246	210	155	78	12	58	53	32	10	5	156	230																						
	1/50	AMD50S																																												
	1/60	AMD60S																																												
	1/75	AMD75S																																												
	1/100	AME100S																																												
	1/130	AME130S																																												
2.2	1/150	AME150S	488	55	145	150	34	16	190	140	22	237	274	245	180	83	15	58	53	38	10	5	156	230																						
	1/200	AMF200S																																												
	1/5	AMD5S																							514	60	128	135	33	2	170	125	17	215	246	210	155	78	12	58	53	32	10	5	176	268
	1/10	AMD10S																																												
	1/15	AMD15S																																												
	1/20	AMD20S																																												
1/25	AME25S																																													
1/30	AME30S																																													
2.2	1/45	AME45S	543	60	157	150	34	16	190	140	22	237	274	245	180	83	15	58	53	38	10	5	176	268																						
	1/50	AME50S																																												
	1/60	AME60S																																												
	1/75	AME75S																																												
	1/100	AMF100S																																												
	1/130	AMG130S																																												
2.2	1/150	AMG150S	601	60	191	200	47	53	270	195	32	315	362	330	235	107	19	82	77	48	14	5.5	176	268																						
	1/200	AMH200S																																												
	1/5	AME5S																							568	71	139	150	34	-9	190	140	22	237	274	245	180	83	15	58	53	38	10	5	193	300
	1/10	AME10S																																												
	1/15	AME15S																																												
	1/20	AME20S																																												
1/25	AMF25S																																													
1/30	AMF30S																																													
2.2	1/45	AMF45S	603	71	150	180	42	13	220	160	25	283	320	280	200	107	19	82	77	42	12	5	193	300																						
	1/50	AMF50S																																												
	1/60	AMF60S																																												
	1/75	AMG75S																																												
	1/100	AMG100S																																												
	1/130	AMH130S																																												
2.2	1/150	AMH150S	658	71	205	225	57	43	300	215	35	345	393	360	265	112	24	82	77	56	16	6	193	300																						
	1/200	AMK200S																																												
2.2	1/150	AMH150S	695	71	219	250	58	67	340	240	40	385	442	410	300	140	24	105	100	63	18	7	193	300																						
	1/200	AMK200S																																												

* For Motor mounting dimension please refer table No. 5 on page 8

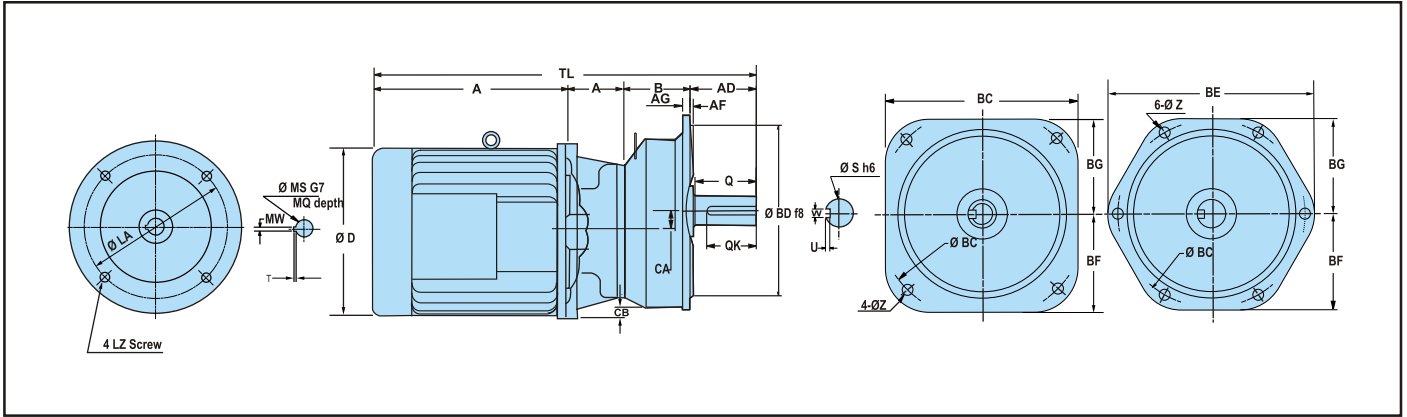
Type (AM) Foot Mounted Motor Mount Reducer with Motor-Dimension Table



Class	Capacity (KW)	Ratio	Frame	Dimension (mm)																																											
				TL	A	B	C	CA	CB	E	F	G	H	I	M	N	R	Z	Q	QK	S	W	U	D	L																						
S	3.7	1/5	AMF5S	634	74	153	180	42	13	220	160	25	283	320	280	200	107	19	82	77	42	12	5	218	325																						
		1/10	AMF10S																																												
		1/15	AMF15S																																												
		1/20	AMF20S																																												
		1/25	AMG25S																																												
		1/30	AMG30S																																												
	5.5	1/45	AMG45S	669	74	188	200	47	28	270	195	32	315	362	330	235	107	19	82	77	48	14	5.5	218	325																						
		1/50	AMG50S																																												
		1/60	AMG60S																																												
		1/75	AMH75S																																												
		1/100	AMH100S																																												
		1/130	AMK130S																																												
	7.5	1/150	AMK150S	733	74	229	250	58	67	340	240	40	385	442	410	300	140	24	105	100	63	18	7	218	325																						
		1/5	AMF5L																							696	91	161	180	42	-12	220	160	25	283	320	280	200	107	19	82	77	42	12	5	260	362
		1/10	AMF10S																																												
		1/15	AMF15S																																												
		1/20	AMG20S																																												
		1/25	AMH25S																																												
1/30	AMH30S																																														
11	1/45	AMH45S	754	91	219	225	57	18	300	215	35	345	393	360	265	112	24	82	77	56	16	6	260	362																							
	1/50	AMH50S																																													
	1/60	AMH60S																																													
	1/75	AMK75S																																													
	1/100	AMK100S																																													
	1/130	AMK130S																																													
11	1/5	AMG5S	749	89	178	200	52	-2	270	195	32	315	362	330	235	107	19	82	77	48	14	5.5	260	400																							
	1/10	AMG10S																																													
	1/15	AMG15S																																													
	1/20	AMH20S																																													
	1/25	AMK25S																																													
	1/30	AMK30S																																													
11	1/45	AMK45S	802	89	208	250	58	42	340	240	40	385	442	410	300	140	24	105	100	63	18	7	260	400																							
	1/50	AMK50S																																													
	1/60	AMK60S																																													
	1/75	AMH75S																																													
	1/100	AMH100S																																													
	1/130	AMK130S																																													
11	1/5	AMH5S	891	123	200	225	55	-5	300	215	35	345	393	360	265	112	24	82	77	56	16	6	310	486																							
	1/10	AMH10S																																													
	1/15	AMH15S																																													
	1/20	AMK20S																																													
	1/25	AMK25S																																													
	1/30	AMK30S																																													

* For Motor mounting dimension please refer table No. 5 on page 8

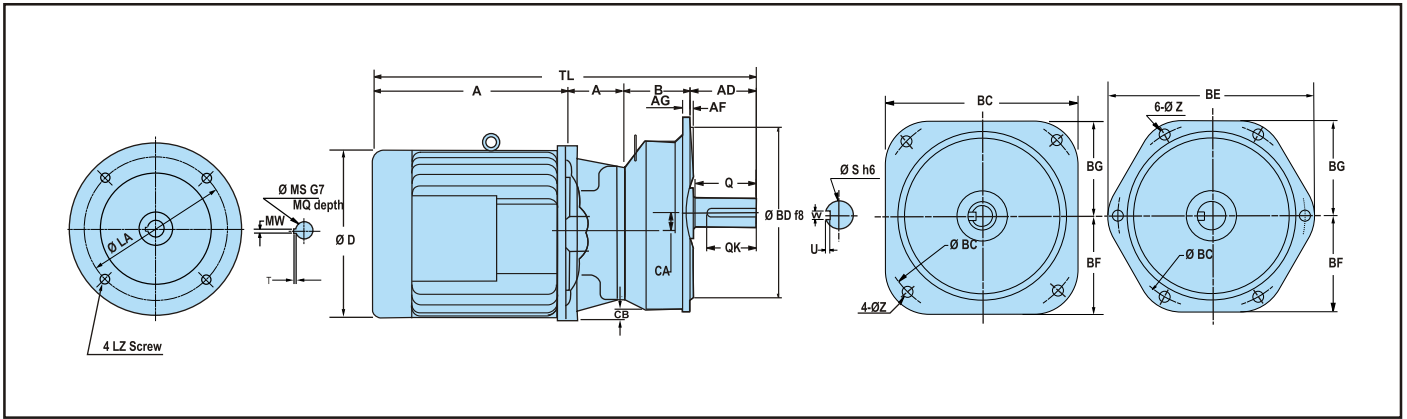
Type (AVM) Flange Mounted Motor Mount Reducer with Motor-Dimension Table



Class	MOTOR (kW)	Ratio	Frame	Dimension (mm)																							
				TL	A	AD	AF	AG	B	CA	CB	Fig.	BC	BD	BE	BF	BG	Z	Q	QK	S	W	U	D	L		
0.4	1/5	AVMA5L	AVMA10L AVMA15L AVMA20L	361	47	34	3	11	77	20	-10	1	160	140	160	90	80	10	28	23	18	6	3.5	140	203		
	1/15	AVMA10L		382	47	42	3	11	90	22	-2	1	180	160	180	100	90	10	36	31	22	6	3.5	140	203		
	1/20	AVMA20L		390	47	42	3	11	98	22	-2	1	180	160	180	100	90	10	36	31	22	6	3.5	140	203		
	0.75	1/25	AVMB25L	AVMB30L AVMB45L AVMB50L AVMB60L AVMB75L	404	47	42	3	12	112	26	9	1	225	180	210	115	105	12	36	31	24	8	4	140	203	
		1/30	AVMB30L		438	47	66	3	16	122	33	17	1	270	230	260	130	130	15	58	53	32	10	5	140	203	
		1/45	AVMB45L		417	55	42	3	11	90	22	-22	1	180	160	180	100	90	10	36	31	22	6	3.5	156	230	
		1.5	1/50	AVMC50L	AVMC25L AVMC30L AVMC45L AVMC50L AVMC60L AVMC75L	425	55	42	3	12	98	26	-11	1	225	180	210	115	105	12	36	31	24	8	4	156	230
			1/60	AVMC60L		439	55	42	3	12	112	26	-11	1	225	180	210	115	105	12	36	31	24	8	4	156	230
1/75			AVMC75L	473		55	66	3	16	122	33	-3	1	270	230	260	130	130	15	58	53	32	10	5	156	230	
2.2			1/100	AVMD100L	A MD130L AVMD150L	488	55	68	5	16	135	34	16	1	310	250	300	150	150	19	58	53	38	10	5	156	230
	1/130		AVMD130L	477		60	42	3	12	107	26	-11	1	225	180	210	115	105	12	36	31	24	8	4	176	268	
	1/150		AVMD150L	514		60	66	3	16	120	33	-3	1	270	230	260	130	130	15	58	53	32	10	5	176	268	
	3.7	1/200	AVME200L	AVMD45L AVMD50L AVMD60L AVMD75L	528	60	66	3	16	134	33	-3	1	270	230	260	130	130	15	58	53	32	10	5	176	268	
		1/100	AVME100L		543	60	68	5	16	147	34	16	1	310	250	300	150	150	19	58	53	38	10	5	176	268	
		1/130	AVMF130L		581	60	92	5	20	161	42	38	2	350	310	390	180	180	19	82	77	42	12	5	176	268	
		4.0	1/150	AVMF150L	601	60	92	5	20	181	47	48	2	380	340	420	195	195	19	82	77	48	14	5.5	176	268	
			1/200	AVMG200L	557	71	66	3	16	120	33	-28	1	270	230	260	130	130	15	58	53	32	10	5	193	300	
1/5			AVMD5L	568	71	68	5	16	129	34	-9	1	310	250	300	150	150	19	58	53	38	10	5	193	300		
1/10			AVMD10L	586	71	68	5	16	147	34	-9	1	310	250	300	150	150	19	58	53	38	10	5	193	300		
1/15			AVMD15L	624	71	92	5	20	161	42	13	2	350	310	390	180	180	19	82	77	42	12	5	193	300		
5.0	1/20	AVMD20L	644	71	92	5	20	181	47	23	2	380	340	420	195	195	19	82	77	48	14	5.5	193	300			
	1/25	AVM 25L	596	74	68	5	16	129	34	-9	1	310	250	300	150	150	19	58	53	38	10	5	218	325			
	1/30	AVME30L	634	74	92	5	20	143	42	13	2	350	310	390	180	180	19	82	77	42	12	5	218	325			
	1/45	AVME45L	655	74	92	5	20	164	42	13	2	350	310	390	180	180	19	82	77	42	12	5	218	325			
	1/50	AVME50L	669	74	92	5	20	178	47	23	2	380	340	420	195	195	19	82	77	48	14	5.5	218	325			

* For Motor mounting dimension please refer table No. 5 on page 8

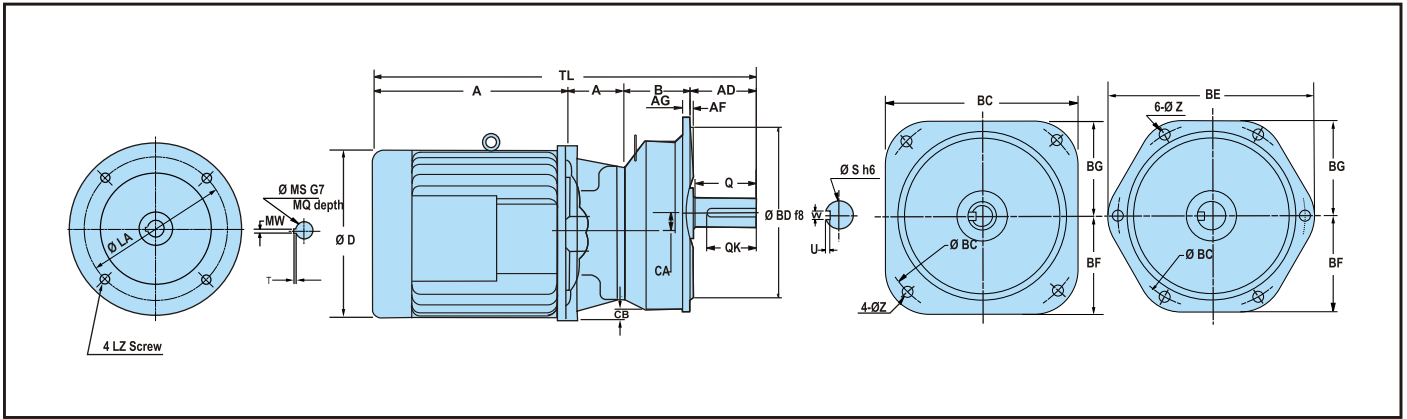
Type (AVM) Flange Mounted Motor Mount Reducer with Motor-Dimension Table



Class	MOTOR (kW)	Ratio	Frame	Dimension (mm)																						
				TL	A	AD	AF	AG	B	CA	CB	Fig.	BC	BD	BE	BF	BG	Z	Q	QK	S	W	U	D	L	
0.4	1/5	AVMB5S																								
	1/10	AVMB10S	382	47	42	3	11	90	22	-2	1	180	160	180	100	90	10	36	31	22	6	3.5	140	203		
	1/15	AVMB15S																								
	1/20	AVMB20S																								
	1/25	AVMC25S																								
	1/30	AVMC30S	390	47	42	3	12	98	26	9	1	225	180	210	115	105	12	36	31	24	8	4	140	203		
	1/45	AVMC45S																								
	1/50	AVMC50S	404	47	42	3	12	112	26	9	1	225	180	210	115	105	12	36	31	24	8	4	140	203		
	1/60	AVMC60S																								
	1/75	AVMC75S																								
	1/100	AVMD100S																								
	1/130	AVMD130S	438	47	66	3	16	122	33	17	1	270	230	260	130	130	15	58	53	32	10	5	140	203		
1/150	AVMD150S																									
1/200	AVME200S	453	47	68	5	16	135	34	36	1	310	250	300	150	150	19	58	53	38	10	5	140	203			
0.75	1/5	AVMC5L																								
	1/10	AVMC10S	425	55	42	3	12	98	26	-11	1	225	180	210	115	105	12	36	31	24	8	4	156	230		
	1/15	AVMC15S																								
	1/20	AVMC20S																								
	1/25	AVMD25S																								
	1/30	AVMD30S	459	55	66	3	16	108	33	-3	1	270	230	260	130	130	15	58	53	32	10	5	156	230		
	1/45	AVMD45S																								
	1/50	AVMD50S	473	55	66	3	16	122	33	-3	1	270	230	260	130	130	15	58	53	32	10	5	140	230		
	1/60	AVMD60S																								
	1/75	AVMD75S																								
	1/100	AVME100S																								
	1/130	AVME130S	488	55	68	5	16	135	34	16	1	310	250	300	150	150	19	58	53	38	10	5	140	230		
1/150	AVME150S																									
1/200	AVMF200S	529	55	92	5	20	152	39	41	2	350	310	390	180	180	19	82	77	42	12	5	140	230			
1.5	1/5	AVMD5S																								
	1/10	AVMD10S	514	60	66	3	16	120	33	-3	1	270	230	260	130	130	15	58	53	32	10	5	176	268		
	1/15	AVMD15S																								
	1/20	AVMD20S																								
	1/25	AVME25S																								
	1/30	AVME30S	525	60	68	5	16	129	34	16	1	310	250	300	150	150	19	58	53	38	10	5	176	268		
	1/45	AVME45S																								
	1/50	AVME50S	543	60	68	5	16	147	34	16	1	310	250	300	150	150	19	58	53	38	10	5	176	268		
	1/60	AVME60S																								
	1/75	AVME75S																								
	1/100	AVMF100S	581	60	92	5	20	161	42	38	2	350	310	390	180	180	19	82	77	42	12	5	176	268		
	1/130	AVMG130S	601	60	92	5	20	181	47	48	2	380	340	420	195	195	19	82	77	48	14	5.5	176	268		
1/150	AVMG150S																									
2.2	1/5	AVME5S																								
	1/10	AVME10S	568	71	68	5	16	129	34	-9	1	310	250	300	150	150	19	58	53	38	10	5	193	300		
	1/15	AVME15S																								
	1/20	AVME20S																								
	1/25	AVMF25S																								
	1/30	AVMF30S	603	71	92	5	20	140	42	13	2	350	310	390	180	180	19	82	77	42	12	5	193	300		
	1/45	AVMF45S																								
	1/50	AVMF50S	624	71	92	5	20	161	42	13	2	350	310	390	180	180	19	82	77	42	12	5	193	300		
	1/60	AVMF60S																								
	1/75	AVMG75S																								
	1/100	AVMG100S	644	71	92	5	20	181	47	23	2	380	340	420	195	195	19	82	77	48	14	5.5	193	300		

* For Motor mounting dimension please refer table No. 5 on page 8

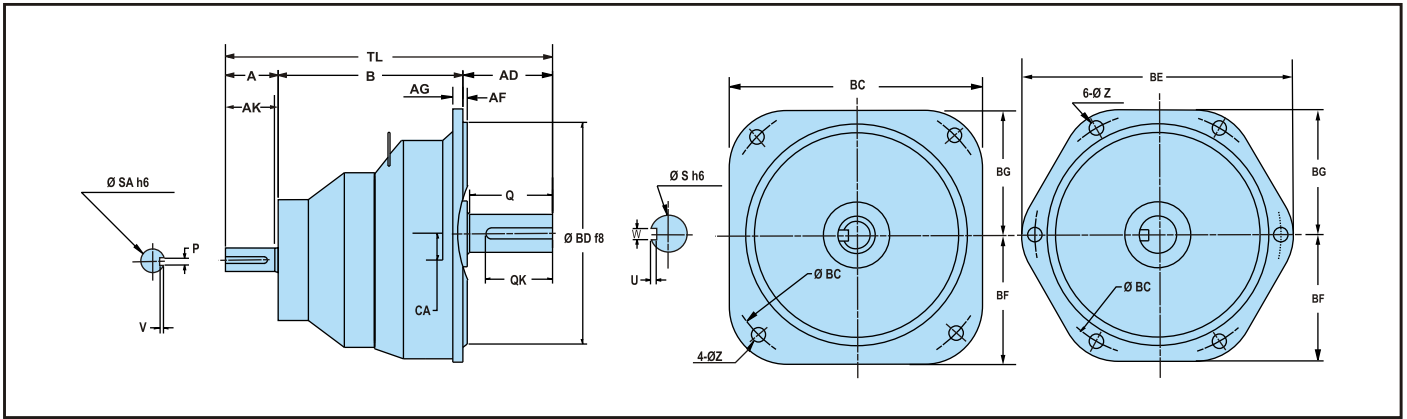
Type (AVM) Flange Mounted Motor Mount Reducer with Motor-Dimension Table



Class	MOTOR (kW)	Ratio	Frame	Dimension (mm)																						
				TL	A	AD	AF	AG	B	CA	CB	Fig.	BC	BD	BE	BF	BG	Z	Q	QK	S	W	U	D	L	
S	3.7	1/5	AVMF5S																							
		1/10	AVMF10S	634	74	92	5	20	143	42	13	2	350	310	390	180	180	19	82	77	42	12	5	218	325	
		1/15	AVMF15S																							
		1/20	AVMF20S																							
	1/25	AVMG25S	643	74	92	5	20	152	47	23	2	380	340	420	195	195	19	82	77	48	14	5.5	218	325		
	1/30	AVMG30S																								
	1/45	AVMG45S																								
	1/50	AVMG50S	669	74	92	5	20	178	47	23	2	380	340	420	195	195	19	82	77	47	14	5.5	218	325		
	1/60	AVMG60S																								
	5.5	1/5	AVMF5L																							
	1/10	AVMF10S	696	71	92	5	20	151	42	-12	2	350	310	390	180	180	19	82	77	42	12	5	260	362		
	1/15	AVMF15S																								
	1/20	AVMG20S	708	91	92	5	20	163	52	-7	2	380	340	420	195	195	19	82	77	47	14	5.5	260	362		
7.5	1/5	AVMG5S																								
	1/10	AVMG10S	835	89	92	5	20	168	52	-7	2	380	340	420	195	195	19	82	77	48	14	5.5	310	486		
	1/15	AVMG15S																								

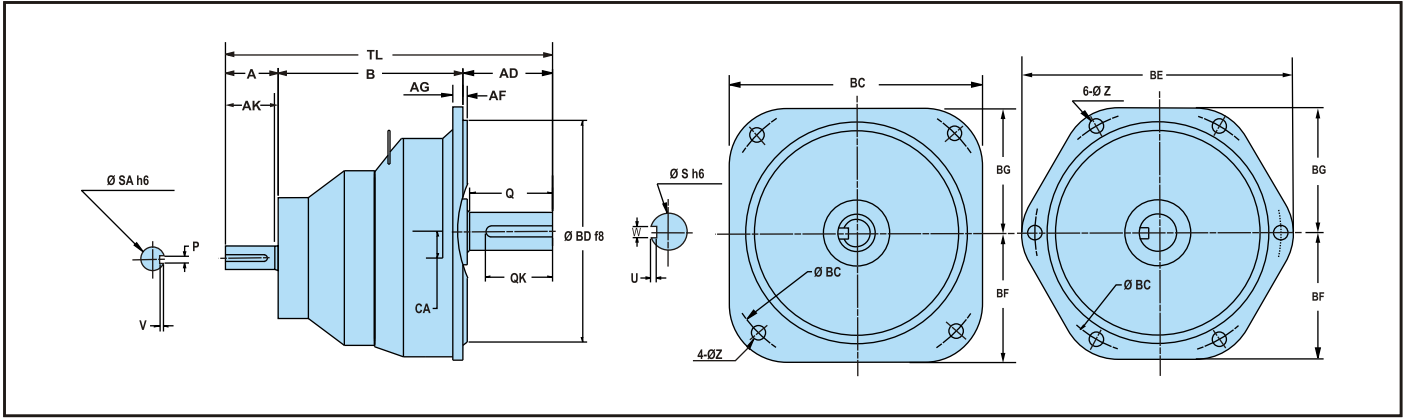
* For Motor mounting dimension please refer table No. 5 on page 8

Type (AVC) Flange Mounted Reducer with Double-Sided Shafts-Dimension Table



Ratio	Reducer Frame	Dimension (mm)																				Mass (kg)				
		KW	TL	AD	AF	AG	B	CA	Flange						Input Shaft-End					Output Shaft-End						
									Fig	BC	BD	BE	BF	BG	Z	A	AK	SA	P	V	Q		QK	S	W	U
1/5	AVCA5L	0.4k W	188	31	3	11	129	20	1	160	140	160	90	80	10	25	20	14	5	3	28	23	18	6	3.5	5
	AVCB5L	0.75k W	239	42	3	11	169	22	1	180	160	180	100	90	10	28	23	18	6	3.5	36	31	22	6	3.5	8.5
	AVCC5L	1.5k W	268	42	3	12	190	26	1	225	180	210	115	105	12	36	31	20	6	3.5	36	31	24	8	4	12
	AVCD5L	2.2k W	322	66	3	16	220	33	1	270	230	260	130	130	15	36	31	22	6	3.5	58	53	32	10	5	24.5
	AVCE5L	3.7k W	347	68	5	16	237	34	1	310	250	300	150	150	19	42	37	25	8	4	58	53	38	10	5	36
	AVCF5S	5.5k W	417	92	5	20	267	42	2	350	310	390	180	180	19	58	53	30	8	4	82	77	42	12	5	46
	AVCG5S	7.5k W	448	92	5	20	298	52	2	380	340	420	195	195	19	58	53	35	10	5	82	77	48	14	5.5	67
1/10	AVCA10L	0.4k W	188	31	3	11	129	20	1	160	140	160	90	80	10	25	20	14	5	3	28	23	18	6	3.5	5
	AVCB10L	0.75k W	239	42	3	11	169	22	1	180	160	180	100	90	10	28	23	18	6	3.5	36	31	22	6	3.5	8.5
	AVCC10L	1.5k W	268	42	3	12	190	26	1	225	180	210	115	105	12	36	31	20	6	3.5	36	31	24	8	4	12
	AVCD10L	2.2k W	322	66	3	16	220	33	1	270	230	260	130	130	15	36	31	22	6	3.5	58	53	32	10	5	24.5
	AVCE10L	3.7k W	347	68	5	16	237	34	1	310	250	300	150	150	19	42	37	25	8	4	58	53	38	10	5	36
	AVCF10S	5.5k W	417	92	5	20	267	42	2	350	310	390	180	180	19	58	53	30	8	4	82	77	42	12	5	46
	AVCG10S	7.5k W	448	92	5	20	298	52	2	380	340	420	195	195	19	58	53	35	10	5	82	77	48	14	5.5	67
1/15	AVCA15L	0.4k W	188	31	3	11	129	20	1	160	140	160	90	80	10	25	20	14	5	3	28	23	18	6	3.5	5
	AVCB15L	0.75k W	239	42	3	11	169	22	1	180	160	180	100	90	10	28	23	18	6	3.5	36	31	22	6	3.5	8.5
	AVCC15L	1.5k W	268	42	3	12	190	26	1	225	180	210	115	105	12	36	31	20	6	3.5	36	31	24	8	4	12
	AVCD15L	2.2k W	322	66	3	16	220	33	1	270	230	260	130	130	15	36	31	22	6	3.5	58	53	32	10	5	24.5
	AVCE15L	3.7k W	347	68	5	16	237	34	1	310	250	300	150	150	19	42	37	25	8	4	58	53	38	10	5	36
	AVCF15S	5.5k W	417	92	5	20	267	42	2	350	310	390	180	180	19	58	53	30	8	4	82	77	42	12	5	46
	AVCG15S	7.5k W	448	92	5	20	298	52	2	380	340	420	195	195	19	58	53	35	10	5	82	77	48	14	5.5	67
1/20	AVCA20L	0.4k W	188	31	3	11	129	20	1	160	140	160	90	80	10	25	20	14	5	3	28	23	18	6	3.5	5
	AVCB20L	0.75k W	239	42	3	11	169	22	1	180	160	180	100	90	10	28	23	18	6	3.5	36	31	22	6	3.5	8.5
	AVCC20L	1.5k W	268	42	3	12	190	26	1	225	180	210	115	105	12	36	31	20	6	3.5	36	31	24	8	4	12
	AVCD20L	2.2k W	322	66	3	16	220	33	1	270	230	260	130	130	15	36	31	22	6	3.5	58	53	32	10	5	24.5
	AVCE20L	3.7k W	347	68	5	16	237	34	1	310	250	300	150	150	19	42	37	25	8	4	58	53	38	10	5	36
	AVCF20S	3.7k W	385	92	5	20	251	42	2	350	310	390	180	180	19	42	37	25	8	4	82	77	42	12	5	46
	AVCG20S	5.5k W	429	92	5	20	279	52	2	380	340	420	195	195	19	58	53	30	8	4	82	77	48	14	5.5	64
1/25	AVCB25L	0.4k W	230	42	3	11	163	22	1	180	160	180	100	90	10	25	20	14	5	3	36	31	22	6	3.5	7.5
	AVCC25L	0.75k W	247	42	3	12	177	26	1	225	180	210	115	105	12	28	23	18	6	3.5	36	31	24	8	4	10
	AVCD25L	1.5k W	305	66	3	16	203	33	1	270	230	260	130	130	15	36	31	20	6	3.5	58	53	32	10	5	24
	AVCE25L	2.2k W	333	68	3	16	229	34	1	310	250	300	150	150	19	36	31	22	6	3.5	58	53	38	10	5	32.5
	AVCF25L	3.7k W	385	92	5	20	251	42	2	350	310	390	180	180	19	42	37	25	8	4	82	77	42	12	5	46
	AVCG25S	3.7k W	394	92	5	20	260	47	2	380	340	420	195	195	19	42	37	25	8	4	82	77	48	14	5.5	64
1/30	AVCB30L	0.4k W	230	42	3	11	163	22	1	180	160	180	100	90	10	25	20	14	5	3	36	31	22	6	3.5	7.5
	AVCC30L	0.75k W	247	42	3	12	177	26	1	225	180	210	115	105	12	28	23	18	6	3.5	36	31	24	8	4	10
	AVCD30L	1.5k W	305	66	3	16	203	33	1	270	230	260	130	130	15	36	31	20	6	3.5	58	53	32	10	5	24
	AVCE30L	2.2k W	333	68	3	16	229	34	1	310	250	300	150	150	19	36	31	22	6	3.5	58	53	38	10	5	32.5
	AVCF30L	3.7k W	385	92	5	20	251	42	2	350	310	390	180	180	19	42	37	25	8	4	82	77	42	12	5	46
	AVCG30S	3.7k W	394	92	5	20	260	47	2	380	340	420	195	195	19	42	37	25	8	4	82	77	48	14	5.5	64

Type (AVC) Flange Mounted Reducer with Double-Sided Shafts-Dimension Table



Ratio	Reducer Frame	Dimension (mm)																				Mass (kg)				
		KW	TL	AD	AF	AG	B	CA	Flange						Input Shaft-End					Output Shaft-End						
									Fig	BC	BD	BE	BF	BG	Z	A	AK	SA	P	V	Q		QK	S	W	U
1/45	AVCB45L	0.4k W	238	42	3	11	171	22	1	180	160	180	100	90	10	25	20	14	5	3	36	31	22	6	3.5	8
	AVCC45L	0.75k W	261	42	3	12	191	26	1	225	180	210	115	105	12	28	23	18	6	3.5	36	31	24	8	4	11
	AVCD45L	1.5k W	319	66	3	16	217	33	1	270	230	260	130	130	15	36	31	20	6	3.5	58	53	32	10	5	25
	AVCE45L	2.2k W	351	68	5	16	247	34	1	310	250	300	150	150	19	36	31	22	6	3.5	58	53	38	10	5	34
	AVCF45L	3.7k W	406	92	5	20	272	42	2	350	310	390	180	180	19	42	37	25	8	4	82	77	42	12	5	48.5
	AVCG45S	3.7k W	420	92	5	20	286	47	2	380	340	420	195	195	19	42	37	25	8	4	82	77	48	14	5.5	69
1/50	AVCB50L	0.4k W	238	42	3	11	171	22	1	180	160	180	100	90	10	25	20	14	5	3	36	31	22	6	3.5	8
	AVCC50L	0.75k W	261	42	3	12	191	26	1	225	180	210	115	105	12	28	23	18	6	3.5	36	31	24	8	4	11
	AVCD50L	1.5k W	319	66	3	16	217	33	1	270	230	260	130	130	15	36	31	20	6	3.5	58	53	32	10	5	25
	AVCE50L	2.2k W	351	68	5	16	247	34	1	310	250	300	150	150	19	36	31	22	6	3.5	58	53	38	10	5	34
	AVCF50L	3.7k W	406	92	5	20	272	42	2	350	310	390	180	180	19	42	37	25	8	4	82	77	42	12	5	48.5
	AVCG50S	3.7k W	420	92	5	20	286	47	2	380	340	420	195	195	19	42	37	25	8	4	82	77	48	14	5.5	69
1/60	AVCB60L	0.4k W	238	42	3	11	171	22	1	180	160	180	100	90	10	25	20	14	5	3	36	31	22	6	3.5	8
	AVCC60L	0.75k W	261	42	3	12	191	26	1	225	180	210	115	105	12	28	23	18	6	3.5	36	31	24	8	4	11
	AVCD60L	1.5k W	319	66	3	16	217	33	1	270	230	260	130	130	15	36	31	20	6	3.5	58	53	32	10	5	25
	AVCE60L	2.2k W	351	68	5	16	247	34	1	310	250	300	150	150	19	36	31	22	6	3.5	58	53	38	10	5	34
	AVCF60L	3.7k W	406	92	5	20	272	42	2	350	310	390	180	180	19	42	37	25	8	4	82	77	42	12	5	48.5
	AVCG60S	3.7k W	420	92	5	20	286	47	2	380	340	420	195	195	19	42	37	25	8	4	82	77	48	14	5.5	69
1/75	AVCB75L	0.4k W	238	42	3	11	171	22	1	180	160	180	100	90	10	25	20	14	5	3	36	31	22	6	3.5	8
	AVCC75L	0.75k W	261	42	3	12	191	26	1	225	180	210	115	105	12	28	23	18	6	3.5	36	31	24	8	4	11
	AVCD75L	1.5k W	319	66	3	16	217	33	1	270	230	260	130	130	15	36	31	20	6	3.5	58	53	32	10	5	25
	AVCE75S	1.5k W	334	68	5	16	230	34	1	310	250	300	150	150	19	36	31	20	6	3.5	58	53	38	10	5	33.5
	AVCF75L	2.2k W	389	92	5	20	261	42	2	350	310	390	180	180	19	36	31	22	6	3.5	82	77	42	12	5	45
	AVCG75S	3.7k W	420	92	5	20	286	47	2	380	340	420	195	195	19	42	37	25	8	4	82	77	48	14	5.5	69
1/100	AVCC100L	0.4k W	252	42	3	12	185	26	1	225	180	210	115	105	12	25	20	14	5	3	36	31	24	8	4	10
	AVCD100L	0.75k W	295	66	3	16	201	33	1	270	230	260	130	130	15	28	23	18	6	3.5	58	53	32	10	5	23
	AVCE100L	1.5k W	334	68	5	16	230	34	1	310	250	300	150	150	19	36	31	20	6	3.5	58	53	38	10	5	33.5
	AVCF100L	2.2k W	389	92	5	20	261	42	2	350	310	390	180	180	19	36	31	22	6	3.5	82	77	42	12	5	45
	AVCG100L	3.7k W	420	92	5	20	286	47	2	380	340	420	195	195	19	42	37	25	8	4	82	77	48	14	5.5	69
1/130	AVCC130L	0.4k W	252	42	3	12	185	26	1	225	180	210	115	105	12	25	20	14	5	3	36	31	24	8	4	10
	AVCD130L	0.75k W	295	66	3	16	201	33	1	270	230	260	130	130	15	28	23	18	6	3.5	58	53	32	10	5	23
	AVCE130S	0.75k W	310	68	5	16	214	34	1	310	250	300	150	150	19	28	23	18	6	3.5	58	53	38	10	5	31.5
	AVCF130L	1.5k W	372	92	5	20	244	42	2	350	310	390	180	180	19	36	31	20	6	3.5	82	77	42	12	5	44.5
	AVCG130L	2.2k W	409	92	5	20	281	47	2	380	340	420	195	195	19	36	31	22	6	3.5	82	77	48	14	5.5	65.5
1/150	AVCC150L	0.4k W	252	42	3	12	185	26	1	225	180	210	115	105	12	25	20	14	5	3	36	31	24	8	4	10
	AVCD150L	0.75k W	295	66	3	16	201	33	1	270	230	260	130	130	15	28	23	18	6	3.5	58	53	32	10	5	23
	AVCE150S	0.75k W	310	68	5	16	214	34	1	310	250	300	150	150	19	28	23	18	6	3.5	58	53	38	10	5	31.5
	AVCF150L	1.5k W	372	92	5	20	244	42	2	350	310	390	180	180	19	36	31	20	6	3.5	82	77	42	12	5	44.5
	AVCG150L	2.2k W	409	92	5	20	281	47	2	380	340	420	195	195	19	36	31	22	6	3.5	82	77	48	14	5.5	65.5
1/200	AVCD200L	0.4k W	286	66	3	16	195	33	1	270	230	260	130	130	15	25	20	14	5	3	58	53	32	10	5	22
	AVCE200L	0.75k W	310	68	5	16	214	34	1	310	250	300	150	150	19	28	23	18	6	3.5	58	53	38	10	5	31.5
	AVCF200S	0.75k W	351	92	5	20	231	39	2	350	310	390	180	180	19	28	23	18	6	3.5	82	77	42	12	5	42.5
	AVCG200L	1.5k W	392	92	5	20	264	47	2	380	340	420	195	195	19	36	31	20	6	3.5	82	77	48	14	5.5	65