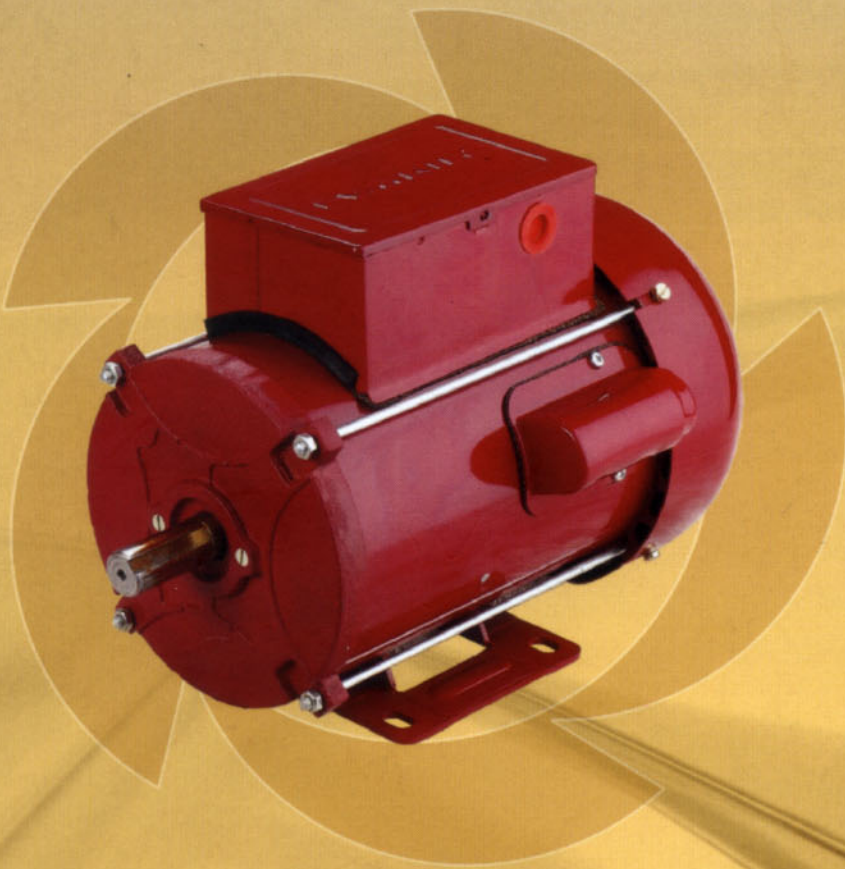



LAWKIM
MOTORS GROUP

Görey

FHP MOTORS





LAWKIM pioneered manufacture of Hermetic Motors in India in 1961 in technical collaboration with Emerson Electric, the giant US electricals conglomerate. Since then it has been the Indian leader in mass manufacture of specialized hermetic motors for sealed compressors. Its motors find wide application in the domestic, commercial, agricultural & industrial segments.

Lawkim produces upto 20,00,000 hermetic motors per annum at its state-of-the-art manufacturing facility and has a capacity to expand production to 25,00,000 motors per annum. It specializes in designing, manufacturing & supplying custom-built motors to the industry.

One of the first companies in the country to qualify in ISO 9001 and ISO 14001 certification, it has UL-approved motors in its range. **Lawkim** has a solid OEM base and also caters to the open market for certain special applications.

Lawkim's goal continues to be to delight its valued customers, beyond mere satisfaction.

LAWKIM MOTORS ARE A CLASS APART

- High Quality
- Competitive prices
- Highly reliable
- Manufactured in a world-class plant

RANGE

Lawkim has a wide range of motors ranging from 20 watts (0.025 hp) to 2250 watts (3 hp) in single phase designs and in three phase designs for 50 & 60 Hz. Lawkim takes keen interest and pride in developing special motors for customers, should standard motor range not suffice.

STANDARDS

- Frames B42, B48 & B56 conform to BS 2048 part I for dimensions and BS 5000 part I I / IS 996 for performance.
- 100s frame motors conform to IS 996 for dimensions and BS 5000 part I I / IS 996 for performance.

RATING

All standard motors are continuously rated to comply with performance standards. Special motors for cyclic or short time duties can also be offered against specific applications.

ENCLOSURES:(LAWKIM offers following enclosures)

- Drip Proof (DP)
- Totally Enclosed (TE)
- Totally Enclosed Fan Cooled (TEFC)
- Air Over Motors (AOM)

MOUNTINGS:Various types of mountings are available

- Foot
- Stator Pad
- Flange
- Foot cum Flange
- Endshield Pad
- Stud
- Special Mounting if required

BEARING & LUBRICATION

Sleeve bearing motors are lubricated for life by using Permawick™ Lubrication system. This can give 50,000 hours of operation without lubrication at normal running. Ball Bearing motors use double shielded deep groove bearings and are life lubricated. This offers you trouble free motor life.

THERMAL OVERLOAD PROTECTION

On single phase motors, manual or auto-reset thermal overload protector can be provided. It can be temperature/current sensitive and provides excellent protection against motor burnouts.

CENTRIFUGAL GEAR AND OPEN CIRCUIT SWITCH

Field proven centrifugal gear is used for trouble free operation. Open circuiting switch has sintered contacts/s consisting of silver alloy and copper. These contacts have excellent antiweld properties and can safely rupture heavy current.

ROTOR/SHAFTS

Pressure die cast rotors are steamblued at our in-house facilities. This leads to very good rust resistance as also improvement in motor efficiency.

All shafts are made of EN8 steel and ground to 10 micron accuracy. All shafts are given anti rust treatment. Stainless steel shafts can also be supplied, if asked for.

APPLICATION ENGINEERING

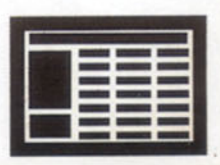
With special emphasis on customer satisfaction, **LAWKIM** can develop a motor as per customer's application requirement.



Surgical Pumps



Domestic Pumps



Air Conditioners



TYPICAL APPLICATIONS

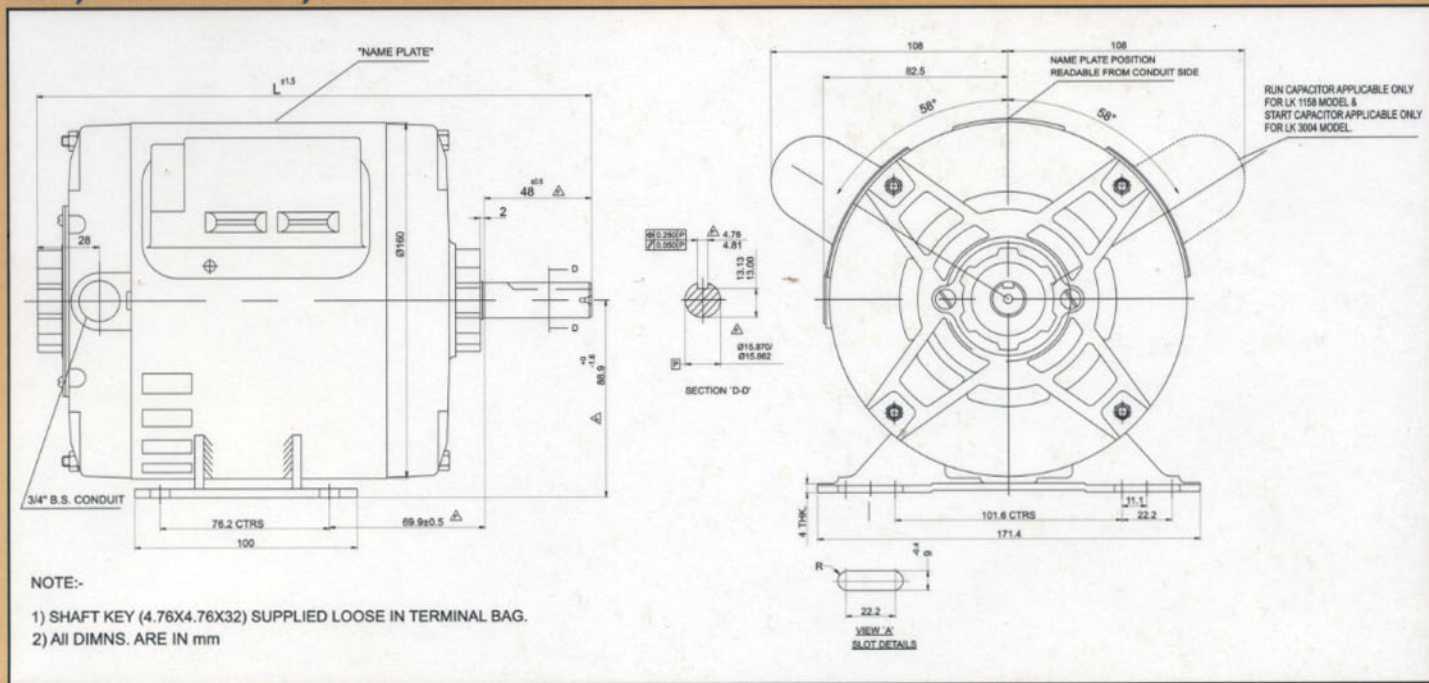
- Vacuum Pumps
- Machine Tools
- Pouch Making Machines
- Jewellery Making Machines
- Wet Grinders
- Box Strapping Machines
- Printing Presses
- Room Coolers
- Sewing Machines
- Floor Polishers
- Sugar Cane Crushers
- Needle Vibrator

B56 Series

Manufacturing Range

SERIES	ENCLOSURES	SINGLE PHASE					
		POLES	SPLIT PHASE	CAP START IND. RUN	CAP START CAP RUN	CAP START & RUN	THREE PHASE
B56	DP TE(AOM) TEFC	2		180-1100 W	1100-1500 W		180-1100 W
		4	90-370 W	90-750 W	750 W		180-750 W
		6	90-250 W	90-250 W		180-550 W	120-550 W
		8				90-180 W	90-250 W

B56, DRIP PROOF, FOOT MTG.



TECHNICAL DETAILS @ 225V, 1 ϕ , 50Hz, 1425 RPM

HP	FRAME	MODEL	ENCL	TYPE	CAP(μ F)		Rated FL		STT (%FLT)	EFF %	P.F	MOTOR Wt In Kg	'L'
					Start	Run	Amps	Watts					
0.25	B56	LK3004	DP	CSIR	50	NA	2.6	370	275	49	0.63	8	249
0.25	B56	LK3072	DP	CSIR	50	NA	2.6	370	275	49	0.63	8	249
0.50	B56	LK3071	DP	CSIR	80	NA	4.2	650	275	57	0.69	10	264
1.0	B56	LK1158	DP	CSCR	120	15	6.0	1100	275	71	0.82	15	304



Compressors



Film Projector



Domestic Flour Mills

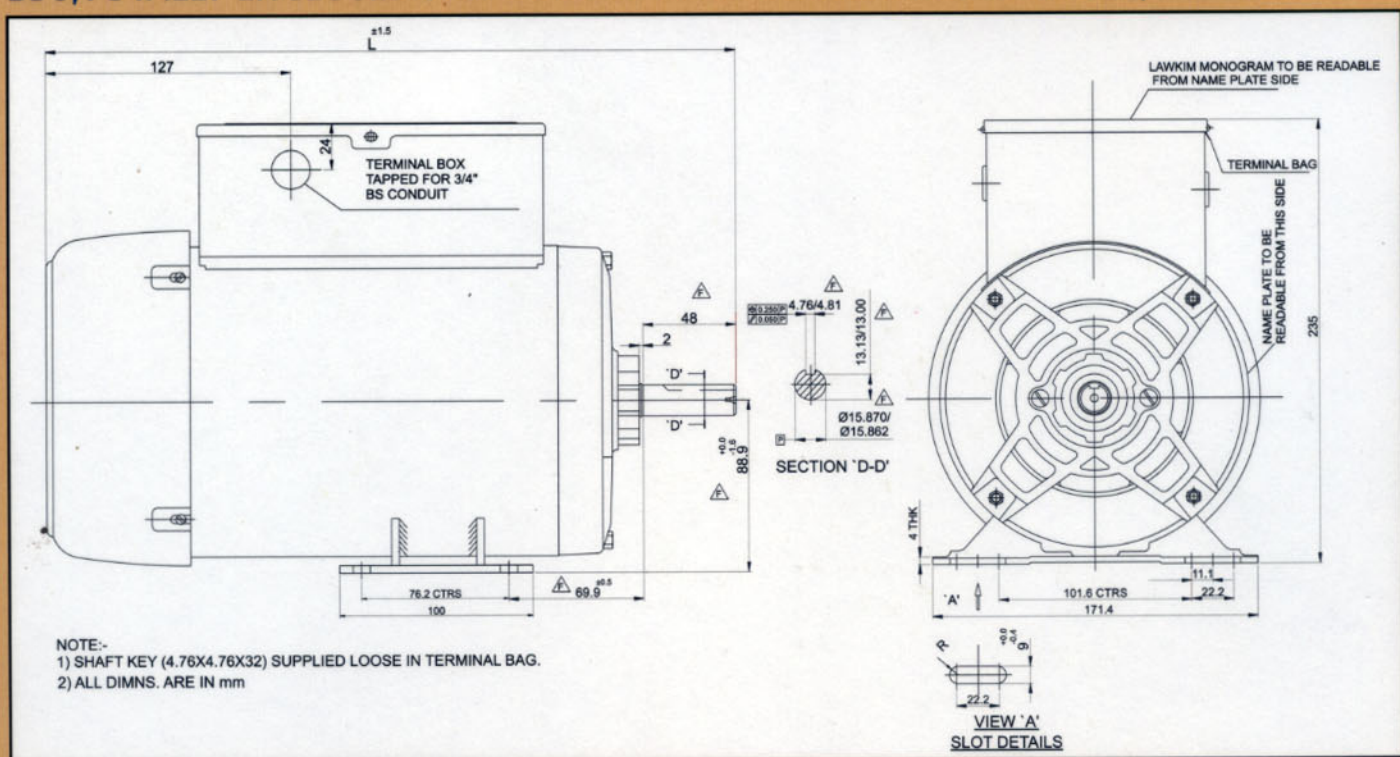


Floor Polishers



Washing Machines

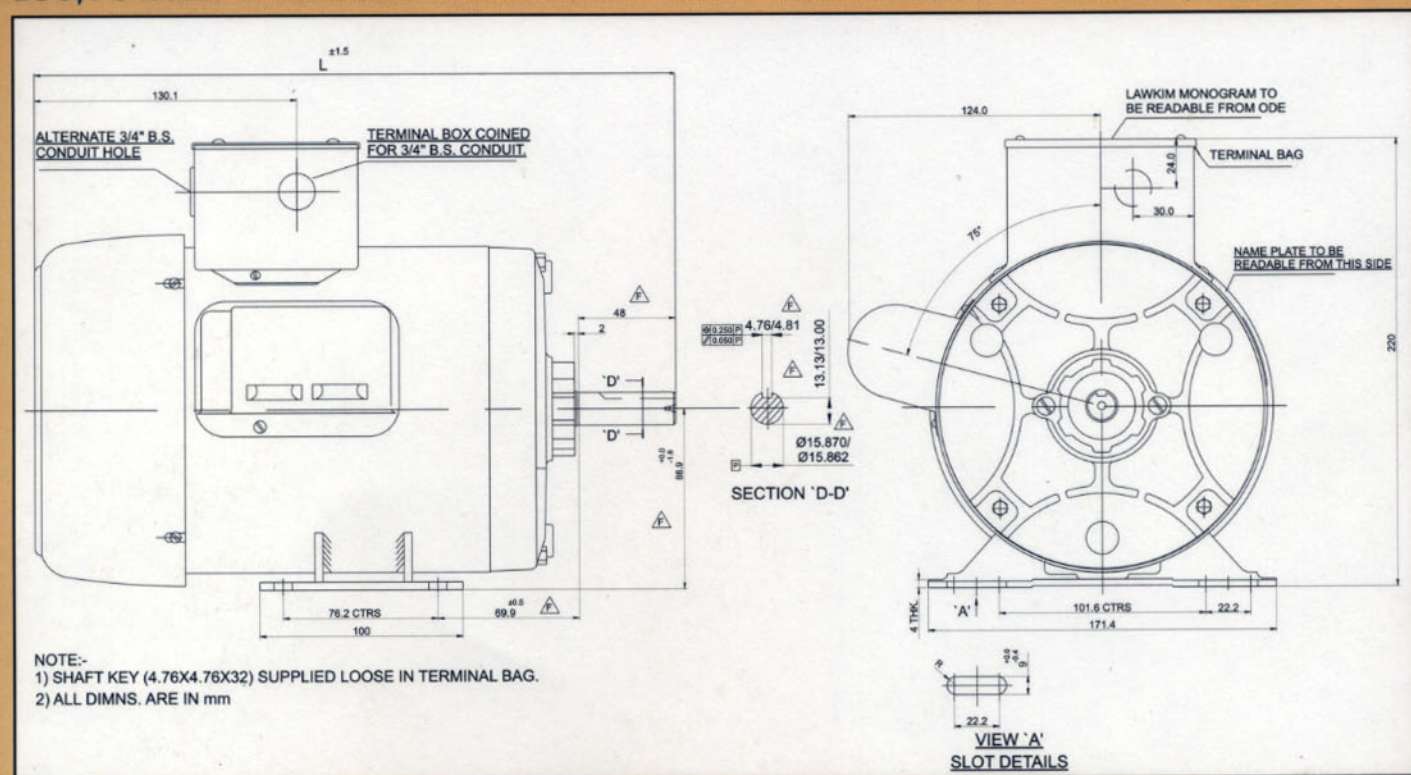
B56, TOTALLY ENCLOSED FAN COOLED WITH TERMINAL BOX LARGE, FOOT MTG



TECHNICAL DETAILS @ 225V, 1 ϕ , 50Hz, 1440 RPM

HP	FRAME	MODEL	ENCL	CAP (μ F)		TYPE	RATED FL		STT (%FLT)	EFF %	P. F	MOTOR Wt In kg	'L'
				Start	Run		Amps	Watts					
1.0	B56	LK1374	TEFC	120	10	CSCR	6.0	1100	275	71	0.82	17	357

B56, TOTALLY ENCLOSED FAN COOLED WITH TERMINAL BOX MEDIUM, FOOT MTG



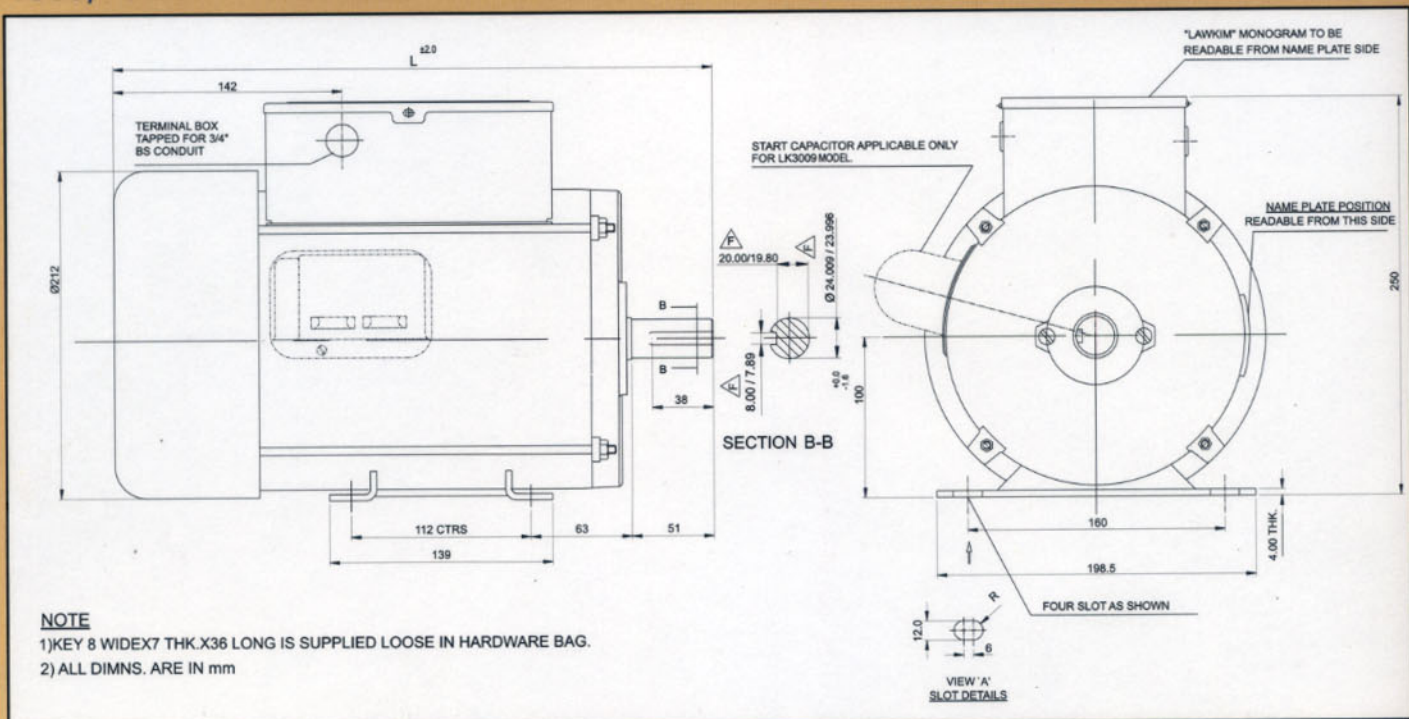
TECHNICAL DETAILS @ 225V, 1 ϕ , 50Hz, 1440 RPM

HP	FRAME	MODEL	ENCL	TYPE	Start CAP (μ F)	Rated FL		STT (%FLT)	EFF %	P. F	MOTOR Wt In kg	'L'
						Amps	Watts					
0.25	B56	LK1326	TEFC	CSIR	50	2.6	370	275	49	0.63	10	287
0.50	B56	LK1350	TEFC	CSIR	100	4.2	650	275	57	0.69	12	322
0.75	B56	LK1365	TEFC	CSIR	120	5.9	890	275	64	0.67	15	342

100S SERIES MOTOR

MANUFACTURING RANGE					
SERIES	ENCLOSURES	SINGLE PHASE			
		POLES	CAP START IND. RUN	CAP START CAP RUN	THREE PHASE
100S	TEFC	4		750-2250 W	1100-2250 W
		6	550-750 W	1100 W	

100S, TOTALLY ENCLOSED FAN COOLED WITH TOP TERMINAL BOX LARGE, FOOT MTG



TECHNICAL DETAILS @ 225V, 1 ϕ , 50Hz, 1440 RPM

HP	FRAME	MODEL	ENCL	TYPE	CAP (μ F)		Rated FL		STT (%FLT)	EFF %	P. F	MOTOR Wt In kg	'L'
					Start	Run	Amps	Watts					
1.5	100S	LK1386	TEFC	CSCR	200	10	8.8	1600	250	68	0.81	23	350
2.0	100S	LK3007	TEFC	CSCR	200	25	10.4	1900	250	79	0.81	25	350
3.0	100S	LK3009	TEFC	CSCR	280	30	13.5	3000	250	75	0.98	30	373



Compressors



Film Projector



Domestic Flour Mills



Floor Polishers



Washing Machines