

Switch to the cost effective circuit breaker solution



MCCB

EcoPlus



BCH ELECTRIC LIMITED
we care for you

RATINGS AND SPECIFICATIONS

MCCB ELECTRICAL CHARACTERISTICS TO IEC 60947-2, EN 60947-2, AS/NZS 3947-2, NEMA AB-1

- Range upto 250A
- Rated at 50° C Ambient to suit Indian environment
- 'CE' marked.



Frame	Unit	Condition	100	125	250
Model			EP100	EP125	EP250
Number of Poles			3	3	3
Type			NF	NF	NF
Nominal current ratings					
	(A)		16,20,25,32 40,50,63,80 100	16,20,25,32 40,50,63,80 100,125	160,200, 225,250
Electrical characteristics					
			50°C	50°C	50°C
Rated operational voltage	(V)	AC 50/60 Hz DC	550 250	690 250	550 250
Rated insulation voltage	(V)		660	690	690
Rated impulse withstand voltage	(kV)		6	6	6
Ultimate breaking capacity (IEC, EN, AS/NZS)	(kA)	690V AC 500V AC 415/440V AC 380/400V AC 220/240V AC 250V DC	– 7.5 10 16 25 7.5	5 12 25 30 50 15	– 10 18/15 18 25 10
Service breaking capacity (IEC, EN, AS/NZS)	(kA)	690V AC 500V AC 415/440V AC 380/400V AC 220/240V AC 250V DC	– 3.8 5 8 13 3.8	2.5 6 13 15 25 7.5	– 5 9/7.5 9 13 5
Rated breaking capacity (NEMA)	(kA)	480V AC 240VAC	7.5 25	15 50	15 25
Protection					
Fixed thermal, fixed magnetic			■	■	■
Utilisation category			A	A	A
Installation					
Front connection (FC)			■	■	■
Cable clamp (FW)			●	●	●
Rear connection (RC)			●	●	●
Plug-in (PM)			–	–	–
Draw- out (DR)			–	–	–
DIN rail mounting (DA)			–	–	–
Dimensions	(mm)		130	155	160
	(mm)	3 pole	75	90	105
	(mm)		68	68	60(68 option)
Weight	(kg)	3 pole	0.74	1.1	1.4

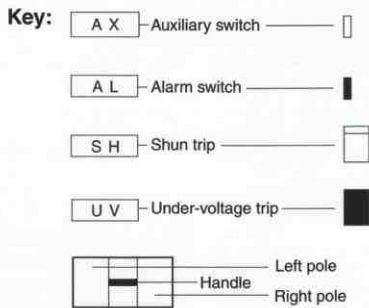
■ Standard ● Optional - Not Available

ACCESSORIES

ELECTRICAL CONTROL USING INTERNALLY MOUNTED ACCESSORIES

Valid Combinations of Internally Mounted Accessories

Breaker	A X Auxiliary switch	A L Alarm switch	S H Shunt trip *1	U V Under-voltage trip *2	A X A L	A X S H	A X U V	A L S H	A L U V	A X A L S H	A X A L U V
EP100											
EP125											
EP250											

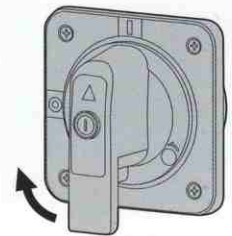


NOTE: *1 Shunt trip is provided with anti-burnout switch.
NOTE: *2 The UVT Controller is installed externally when provided with AC UVT.
NOTE: *3 UV coil is not available in 250 Amp frame.

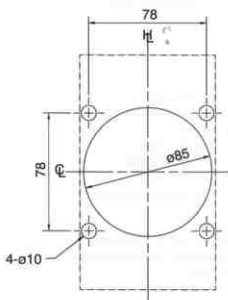
OPERATING HANDLES & LOCKING DEVICES

Door Mounted Handle (HP)

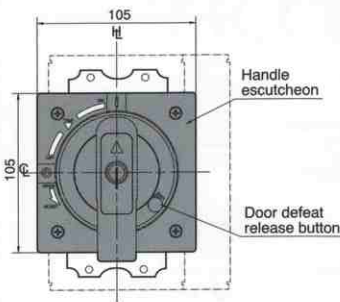
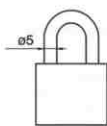
The door mounted operating handle, RESET-to-open type, is used to operate a circuit breaker mounted inside a cubicle from outside the door. It consists of an operating mechanism that is mounted on the breaker, an operating handle that is mounted on the door, and a shaft that transmits the turning force from the handle to the operating unit. The shaft can be cut to the required length. The operating handle is available in black or red and yellow.



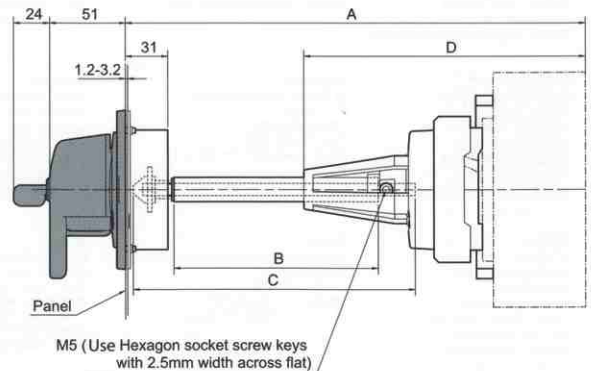
Rotate the handle clockwise turns ON



Padlock dimensions (mm)



Panel cutout

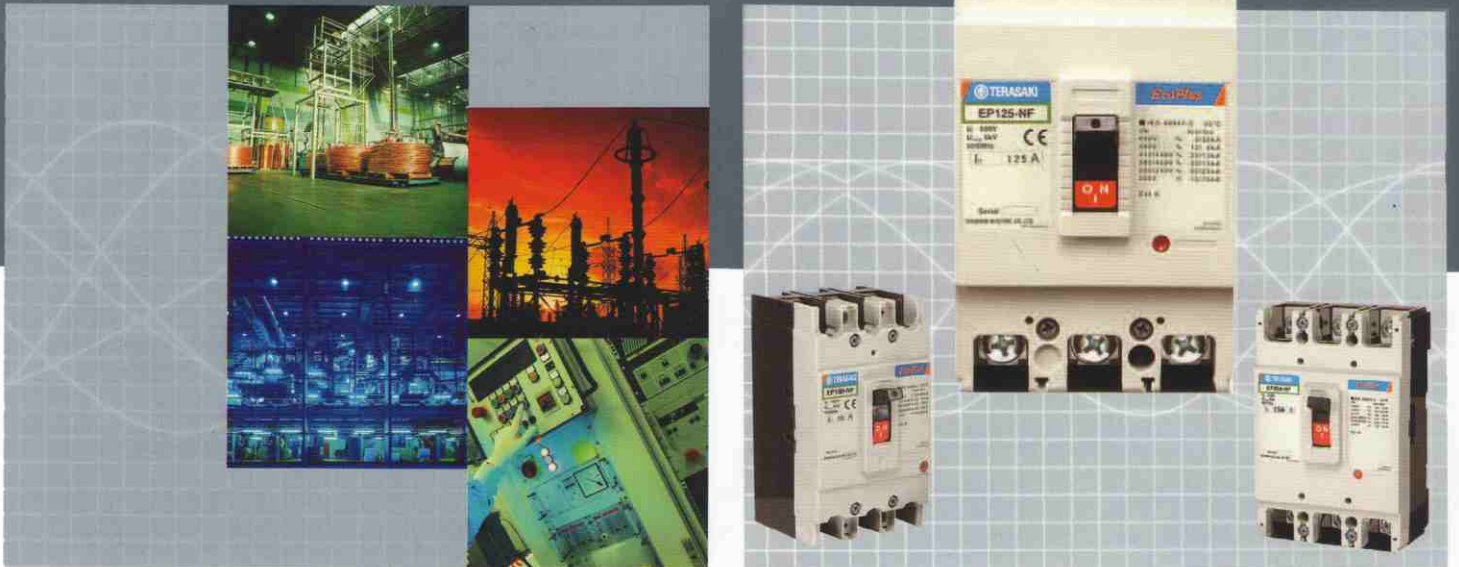


Applicable MCCB	A *1	B	C (La)	D	Shaft support
EP100	547 max.	370	421	194	with +
EP125					
EP250	543 max.	370	421	190	with +

*1: Max. means the maximum length for A without cutting the shaft.

+ The shaft can be cut to the required length. If it is necessary to cut the shaft so short that it does not protrude beyond the shaft support, the shaft support may be removed.

Switch to the cost effective circuit breaker solution



MCCB

EcoPlus



BCH ELECTRIC LIMITED
we care for you

RATINGS AND SPECIFICATIONS

MCCB ELECTRICAL CHARACTERISTICS TO IEC 60947-2, EN 60947-2, AS/NZS 3947-2, NEMA AB-1

- Range upto 250A
- Rated at 50° C Ambient to suit Indian environment
- 'CE' marked.



Frame	Unit	Condition	100	125	250
Model			EP100	EP125	EP250
Number of Poles			3	3	3
Type			NF	NF	NF
Nominal current ratings					
	(A)		16,20,25,32 40,50,63,80 100	16,20,25,32 40,50,63,80 100,125	160,200, 225,250
Electrical characteristics					
			50°C	50°C	50°C
Rated operational voltage	(V)	AC 50/60 Hz DC	550 250	690 250	550 250
Rated insulation voltage	(V)		660	690	690
Rated impulse withstand voltage	(kV)		6	6	6
Ultimate breaking capacity (IEC, EN, AS/NZS)	(kA)	690V AC 500V AC 415/440V AC 380/400V AC 220/240V AC 250V DC	– 7.5 10 16 25 7.5	5 12 25 30 50 15	– 10 18/15 18 25 10
Service breaking capacity (IEC, EN, AS/NZS)	(kA)	690V AC 500V AC 415/440V AC 380/400V AC 220/240V AC 250V DC	– 3.8 5 8 13 3.8	2.5 6 13 15 25 7.5	– 5 9/7.5 9 13 5
Rated breaking capacity (NEMA)	(kA)	480V AC 240VAC	7.5 25	15 50	15 25
Protection					
Fixed thermal, fixed magnetic			■	■	■
Utilisation category			A	A	A
Installation					
Front connection (FC)			■	■	■
Cable clamp (FW)			●	●	●
Rear connection (RC)			●	●	●
Plug-in (PM)			–	–	–
Draw- out (DR)			–	–	–
DIN rail mounting (DA)			–	–	–
Dimensions	(mm)		130	155	160
	(mm)	3 pole	75	90	105
	(mm)		68	68	60(68 option)
Weight	(kg)	3 pole	0.74	1.1	1.4

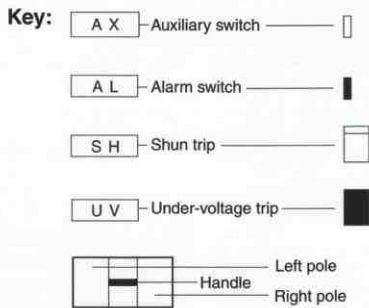
■ Standard ● Optional - Not Available

ACCESSORIES

ELECTRICAL CONTROL USING INTERNALLY MOUNTED ACCESSORIES

Valid Combinations of Internally Mounted Accessories

Breaker	A X Auxiliary switch	A L Alarm switch	S H Shunt trip *1	U V Under-voltage trip *2	A X A L	A X S H	A X U V	A L S H	A L U V	A X A L S H	A X A L U V
EP100											
EP125											
EP250											

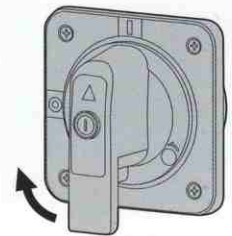


NOTE: *1 Shunt trip is provided with anti-burnout switch.
NOTE: *2 The UVT Controller is installed externally when provided with AC UVT.
NOTE: *3 UV coil is not available in 250 Amp frame.

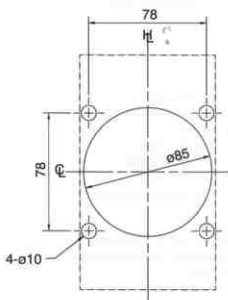
OPERATING HANDLES & LOCKING DEVICES

Door Mounted Handle (HP)

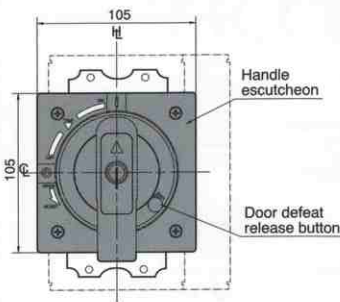
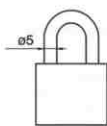
The door mounted operating handle, RESET-to-open type, is used to operate a circuit breaker mounted inside a cubicle from outside the door. It consists of an operating mechanism that is mounted on the breaker, an operating handle that is mounted on the door, and a shaft that transmits the turning force from the handle to the operating unit. The shaft can be cut to the required length. The operating handle is available in black or red and yellow.



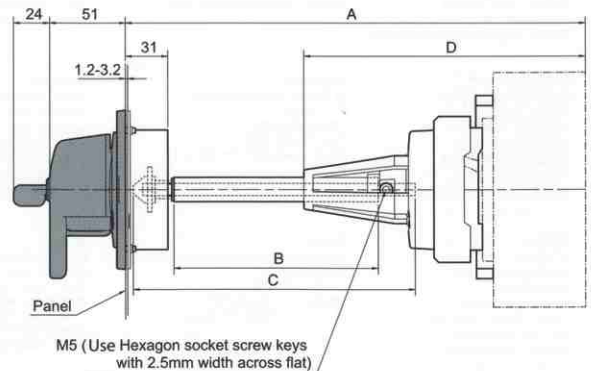
Rotate the handle clockwise turns ON



Padlock dimensions (mm)



Panel cutout



Applicable MCCB	A *1	B	C (La)	D	Shaft support
EP100	547 max.	370	421	194	with +
EP125					
EP250	543 max.	370	421	190	with +

*1: Max. means the maximum length for A without cutting the shaft.

+ The shaft can be cut to the required length. If it is necessary to cut the shaft so short that it does not protrude beyond the shaft support, the shaft support may be removed.