



MOTOR PROTECTION CIRCUIT BREAKER



BCH ELECTRIC LIMITED
we care for you

Motor Protection Cuircuit Breaker

Features

- Sensitive to phase failure in compliance with EN 60947-4-1, IEC 947-4-1
- Reliable protection at overloads and short circuits
- Simple and fast mounting by snap fitting on 35mm wide mounting rail in compliance with EN 50022; fixing with two screws in also possible
- It is convenient also for mounting in an installation distribution box
- Main application field : control (start-up, protection and switch-off) of A.C. electric motors with power up to 11 kW (380/400 V) or other consumers up to 25 A; it can also be used as the main switch according to EN 60204 standards
- Numerous accessories make the application field wider and enable the fulfillment of the majority of user's demands

Specifications

TYPE WITH THERMAL MAGNETIC RELEASE	SETTING RANGE (A)	MOTOR RATING IN kW at 415V	OPERATING CURRENT OF SHORT-CIRCUIT RELEASE (A)	BREAKING CAPACITY IN kA at 400V	MAX. BACK-UP FUSES (gL, aM) at 400V
MPE - 01	0, 1...0, 16		1, 9	100 KA	No back-up fuses required
MPE - 02	0, 16...0, 25	0, 06	2, 6		
MPE - 03	0, 25...0, 4	0, 12	4, 4		
MPE - 04	0, 4...0, 63	0, 18	8		
MPE - 05	0, 63...1	0, 25	11		
MPE - 06	1...1, 6	0, 37...0, 55	19		
MPE - 07	1, 6...2, 5	0, 75...1, 1	30		
MPE - 08	2, 5...4	1, 5	42		
MPE - 10	4...6, 3	2, 2...3	69		
MPE - 14	6, 3...10	4...5	110		
MPE - 16	10...16	5, 5...9	210	4	
MPE - 20	16...20	11	220	4	
MPE - 22	20...25	12, 5	330	4	

Version

MPE

Motor protection unit with thermal and magnetic short-circuit release

MPET

Motor protection unit with thermal overload release

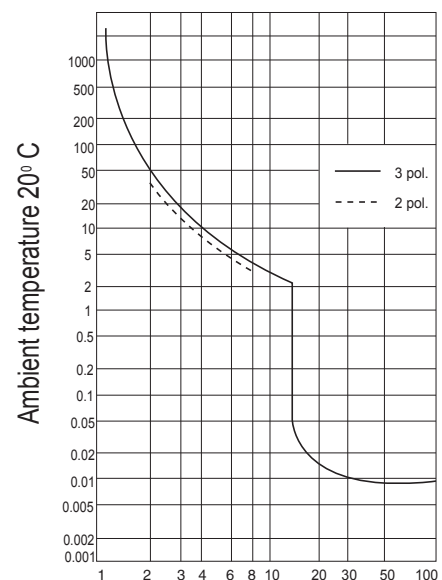
Special versions for single -phase consumers; (on request)

MPES with overload and short-circuit release

MPEST 20 with overload release



Time Current Characteristic
Mean values of operating times
for MPE



Current as a multiplier of the set current



Technical Data

GENERAL	
Standards	IEC 947
Mechanical endurance op. cy	100000
Impact resistance at impact duration of 20 ms	20g
Ambient temperature	Open
	Enclosed
Temperature compensation	-25...+50°C
Weight approx.	250g
Protection degree	IP 20
MAIN CIRCUITS	
Rated insulation voltage Ui	690V
Rated impulse insulation withstand voltage Uimp	6kV
Thermal current Ith max = Ie max	25A
Electrical endurance at AC 3 and Ie	op. cy. 100000
Utilization category : AC 3 upto	690V
Terminal capacity (1 or 2 conductors)	0.75...4 mm ²
AUXILIARY SWITCH PS	
Rated insulation voltage Ui	500V
Thermal current Ith	6A
Rated operational current Ie	230 V
at utilization category AC 15	400 V
	500 V
Short circuit protection - max fuses	6 A (gL, gG)
Terminal capacity (1 or 2 conductors)	0,75...2,5 mm ²

Accessories

Auxiliary Switch



REFERENCE	CONTACTS
MPA - 0010	1NO
MPA - 0001	1NC
MPA - 0011	1NO + 1NC
MPA - 0020	2NO
MPA - 11 V	1NO + 1NC (Flush)



Enclosure (IP55)

REFERENCE	TYPE
MPA - EF ■	Flush Mounted
MPA - ES ■	Surface Mounted

Alarm Switch

REFERENCE	CONTACTS
MPA - RS01	1NC
MPA - RS10	1NO



Bus Bar

REFERENCE	CONTACTS
MPA - BB245	2 Tap-off 45mm
MPA - BB345	3 Tap-off 45mm
MPA - BB445	4 Tap-off 45mm
MPA - BB545	5 Tap-off 45mm
MPA - BB263	2 Tap-off 63mm
MPA - BB463	4 Tap-off 63mm
MPA - BBI	Incoming Block

Voltage Releases

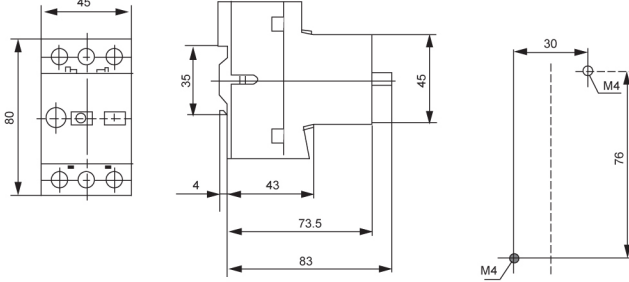
REFERENCE	TYPE
MPA - U ■	Under Voltage Release (24-600V AC)
MPA - S ■	Short Release (24-600V AC)



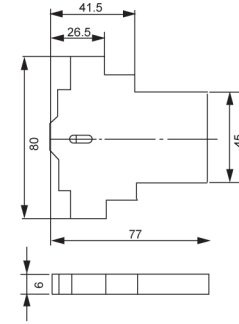
■ A : 110V AC, K : 230V AC, M : 415V AC, U : 24V AC, R : 42V AC

Dimensions (mm)

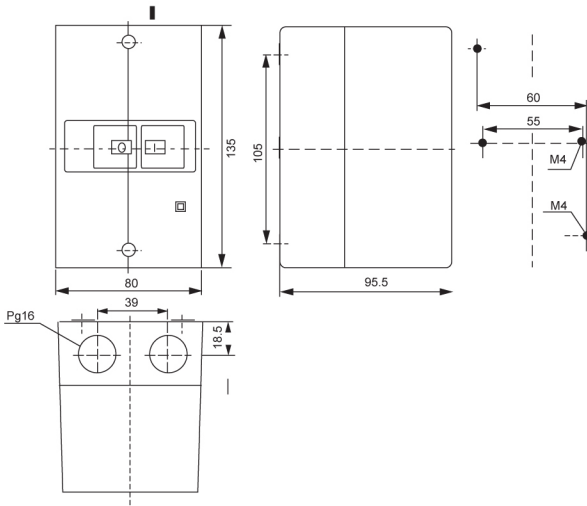
MPE Motor Protection Circuit Breaker



Auxiliary Switch



IP 41/55 Enclosure



IP 41/55 Front Plate

